

Anti-MPHOSPH10 antibody (60-140 aa) (STJ96444)

GENERAL INFORMATION

Product Type	Primary antibodies
Applications	WB/ELISA/IHC
Host / Source	Rabbit
Reactivity	Human/Rat/Mouse

PRODUCT PROPERTIES

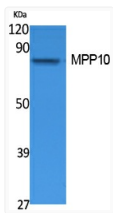
Clonality	Polyclonal
Concentration	1 mg/mL
Conjugation	Unconjugated
Purification	The antibody was affinity-purified from rabbit antiserum by affinity-chromatography using epitope-specific immunogen.
Dilution Range	WB 1:500-2000 IHC-P 1:50-300 ELISA 2000-20000
Formulation	Liquid in PBS containing 50% Glycerol, 0.5% BSA and 0.02% Sodium Azide.
Isotype	IgG
Molecular Weight	Observed: 78kD
Storage Instruction	Store at -20°C for up to 1 year from the date of receipt, and avoid repeat freeze-thaw cycles.

TARGET INFORMATION

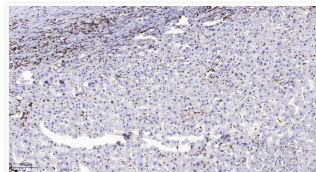
Gene ID	10199
Gene Symbol	MPHOSPH10
UniProt ID	MPP10_HUMAN
Immunogen Region	60-140 aa
Specificity	MPP10 Polyclonal Antibody detects endogenous levels of MPP10 protein.

ADDITIONAL INFORMATION

Note STRICTLY FOR FURTHER SCIENTIFIC RESEARCH USE ONLY (RUO). MUST NOT TO BE USED IN DIAGNOSTIC OR THERAPEUTIC APPLICATIONS.



Western blot analysis of extracts from Jurkat cells, using MPP10 Polyclonal Antibody. Secondary antibody (catalog#: STJ96444)



Immunohistochemical analysis of paraffin-embedded human liver cancer. 1. Antibody was diluted at 1:200 (4° overnight). STJ96444