

Anti-DCLRE1B antibody (C-Term) (STJ96429)

GENERAL INFORMATION

Product Type	Primary antibodies
Applications	WB/ELISA/IHC
Host / Source	Rabbit
Reactivity	Human/Rat/Mouse

PRODUCT PROPERTIES

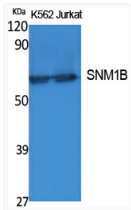
Clonality	Polyclonal
Concentration	1 mg/mL
Conjugation	Unconjugated
Purification	The antibody was affinity-purified from rabbit antiserum by affinity-chromatography using epitope-specific immunogen.
Dilution Range	WB 1:500-2000 IHC-P 1:50-300 ELISA 2000-20000
Formulation	Liquid in PBS containing 50% Glycerol, 0.5% BSA and 0.02% Sodium Azide.
Isotype	IgG
Molecular Weight	Observed: 60kD
Storage Instruction	Store at -20°C for up to 1 year from the date of receipt, and avoid repeat freeze-thaw cycles.

TARGET INFORMATION

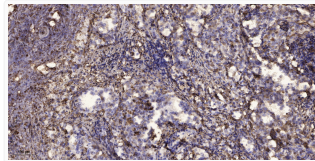
Gene ID	64858
Gene Symbol	DCLRE1B
UniProt ID	DCR1B_HUMAN
Immunogen Region	C-Term
Specificity	SNM1B Polyclonal Antibody detects endogenous levels of SNM1B protein.

ADDITIONAL INFORMATION

Note STRICTLY FOR FURTHER SCIENTIFIC RESEARCH USE ONLY (RUO). MUST NOT TO BE USED IN DIAGNOSTIC OR THERAPEUTIC APPLICATIONS.



Western Blot analysis of extracts from K562 and Jurkat cells, using SNM1B Polyclonal Antibody. Secondary antibody STJ96429



Immunohistochemical analysis of paraffin-embedded human squamous cell carcinoma of the lung. 1, Antibody was diluted at STJ96429