

Anti-APLP1 antibody (360-440 aa) (STJ96423)

GENERAL INFORMATION

Product Type	Primary antibodies
Applications	WB/IHC/IF/ELISA
Host / Source	Rabbit
Reactivity	Human/Mouse

PRODUCT PROPERTIES

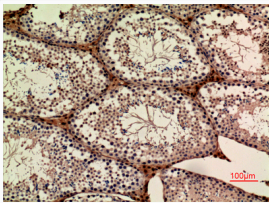
Clonality	Polyclonal
Concentration	1 mg/mL
Conjugation	Unconjugated
Purification	The antibody was affinity-purified from rabbit antiserum by affinity-chromatography using epitope-specific immunogen.
Dilution Range	WB 1:500-1:2000 IHC-P 1:100-300 ELISA 1:10000 IF 1:50-200
Formulation	Liquid in PBS containing 50% Glycerol, 0.5% BSA and 0.02% Sodium Azide.
Isotype	IgG
Molecular Weight	Observed: 72kD
Storage Instruction	Store at -20°C for up to 1 year from the date of receipt, and avoid repeat freeze-thaw cycles.

TARGET INFORMATION

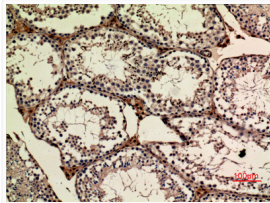
Gene ID	333
Gene Symbol	APLP1
UniProt ID	APLP1_HUMAN
Immunogen Region	360-440 aa
Specificity	APLP-1 Polyclonal Antibody detects endogenous levels of APLP-1 protein.

ADDITIONAL INFORMATION

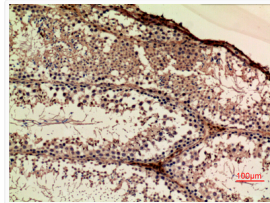
Note STRICTLY FOR FURTHER SCIENTIFIC RESEARCH USE ONLY (RUO). MUST NOT TO BE USED IN DIAGNOSTIC OR THERAPEUTIC APPLICATIONS.



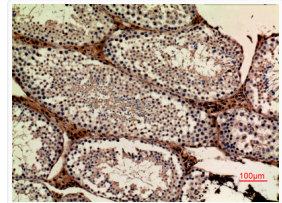
Immunohistochemical analysis of paraffin-embedded mouse-ovary, antibody was diluted at 1:100



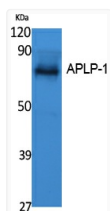
Immunohistochemical analysis of paraffin-embedded mouse-ovary, antibody was diluted at 1:100



Immunohistochemical analysis of paraffin-embedded mouse-ovary, antibody was diluted at 1:100



Immunohistochemical analysis of paraffin-embedded mouse-ovary, antibody was diluted at 1:100



Western blot analysis of extracts from K562 cells, using APLP-1 Polyclonal Antibody. Secondary antibody was diluted at 1:20000