

Anti-B3GLCT antibody (449-498 aa) (STJ96370)

GENERAL INFORMATION

Product Type	Primary antibodies
Applications	WB/IHC/IF/ELISA
Host / Source	Rabbit
Reactivity	Human/Rat/Mouse

PRODUCT PROPERTIES

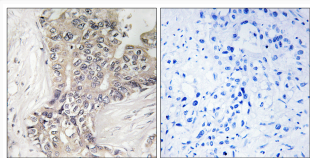
Clonality	Polyclonal
Concentration	1 mg/mL
Conjugation	Unconjugated
Purification	The antibody was affinity-purified from rabbit antiserum by affinity-chromatography using epitope-specific immunogen.
Dilution Range	WB 1:500-1:2000 IHC 1:100-1:300 ELISA 1:40000 IF 1:50-200
Formulation	Liquid in PBS containing 50% Glycerol, 0.5% BSA and 0.02% Sodium Azide.
Isotype	IgG
Molecular Weight	Observed: 57kD
Storage Instruction	Store at -20°C for up to 1 year from the date of receipt, and avoid repeat freeze-thaw cycles.

TARGET INFORMATION

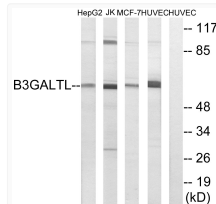
Gene ID	145173
Gene Symbol	B3GLCT
UniProt ID	B3GLT_HUMAN
Immunogen Region	449-498 aa
Specificity	Beta-1, 3-Gal-TL Polyclonal Antibody detects endogenous levels of Beta-1, 3-Gal-TL protein.

ADDITIONAL INFORMATION

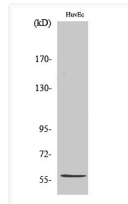
Note **STRICTLY FOR FURTHER SCIENTIFIC RESEARCH USE ONLY (RUO). MUST NOT TO BE USED IN DIAGNOSTIC OR THERAPEUTIC APPLICATIONS.**



Immunohistochemistry analysis of paraffin-embedded human liver carcinoma tissue, using B3GALTL Antibody. The picture on the right is blocked with the synthesized peptide.



Western blot analysis of lysates from HUVEC, MCF-7, Jurkat, and HepG2 cells, using B3GALTL Antibody. The lane on the right is blocked with the synthesized peptide.



Western blot analysis of various cells using Beta-1, 3-Gal-TL Polyclonal Antibody diluted at 1:500. Secondary antibody was diluted at 1:20000