

Anti-ZRANB2 antibody (106-155 aa) (STJ96317)

GENERAL INFORMATION

Product Type	Primary antibodies
Applications	WB/IHC/IF/ELISA
Host / Source	Rabbit
Reactivity	Human/Mouse/Rat

PRODUCT PROPERTIES

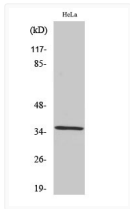
Clonality	Polyclonal
Concentration	1 mg/mL
Conjugation	Unconjugated
Purification	The antibody was affinity-purified from rabbit antiserum by affinity-chromatography using epitope-specific immunogen.
Dilution Range	WB 1:500-1:2000 IHC 1:100-1:300 IF 1:200-1:1000 ELISA 1:10000
Formulation	Liquid in PBS containing 50% Glycerol, 0.5% BSA and 0.02% Sodium Azide.
Isotype	IgG
Molecular Weight	Observed: 34kD
Storage Instruction	Store at -20°C for up to 1 year from the date of receipt, and avoid repeat freeze-thaw cycles.

TARGET INFORMATION

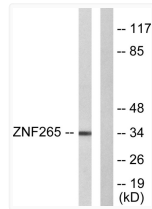
Gene ID	9406
Gene Symbol	ZRANB2
UniProt ID	ZRAB2_HUMAN
Immunogen Region	106-155 aa
Specificity	ZIS Polyclonal Antibody detects endogenous levels of ZIS protein.

ADDITIONAL INFORMATION

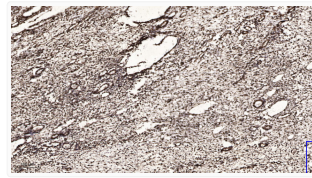
Note STRICTLY FOR FURTHER SCIENTIFIC RESEARCH USE ONLY (RUO). MUST NOT TO BE USED IN DIAGNOSTIC OR THERAPEUTIC APPLICATIONS.



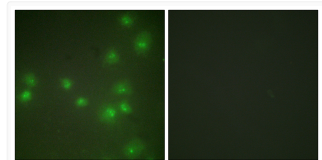
Western blot analysis of various cells using ZIS polyclonal antibody. Secondary antibody was diluted STJ96317



Western blot analysis of lysates from HeLa cells, using ZNF265 Antibody. The lane on the right was blocked with the STJ96317



Immunohistochemical analysis of paraffin-embedded human oophoroma. 1, Antibody was diluted at 1:200 (4°C overnight). 2, STJ96317



Immunofluorescence analysis of HUVEC cells using ZNF265 Antibody. The picture on the right is blocked with the STJ96317