

Anti-SLC39A7 antibody (131-180 aa) (STJ96315)

GENERAL INFORMATION

Product Type	Primary antibodies
Applications	WB/ELISA
Host / Source	Rabbit
Reactivity	Human/Mouse/Rat

PRODUCT PROPERTIES

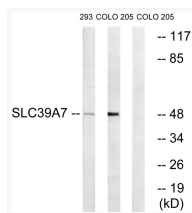
Clonality	Polyclonal
Concentration	1 mg/mL
Conjugation	Unconjugated
Purification	The antibody was affinity-purified from rabbit antiserum by affinity-chromatography using epitope-specific immunogen.
Dilution Range	WB 1:500-1:2000 ELISA 1:5000
Formulation	Liquid in PBS containing 50% Glycerol, 0.5% BSA and 0.02% Sodium Azide.
Isotype	IgG
Molecular Weight	Observed: 50kD
Storage Instruction	Store at -20°C for up to 1 year from the date of receipt, and avoid repeat freeze-thaw cycles.

TARGET INFORMATION

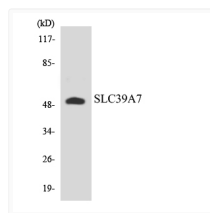
Gene ID	7922
Gene Symbol	SLC39A7
UniProt ID	S39A7_HUMAN
Immunogen Region	131-180 aa
Specificity	ZIP7 Polyclonal Antibody detects endogenous levels of ZIP7 protein.

ADDITIONAL INFORMATION

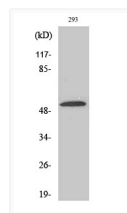
Note **STRICTLY FOR FURTHER SCIENTIFIC RESEARCH USE ONLY (RUO). MUST NOT TO BE USED IN DIAGNOSTIC OR THERAPEUTIC APPLICATIONS.**



Western blot analysis of lysates from 293 and COLO cells, using SLC39A7 Antibody. The lane on the right is blocked with the synthesized peptide.



Western blot analysis of the lysates from HUVECells using SLC39A7 antibody.



Western blot analysis of various cells using ZIP7 Polyclonal Antibody. Secondary antibody was diluted at 1:20000.