

Anti-SLC39A4 antibody (431-480 aa) (STJ96314)

GENERAL INFORMATION

Product Type	Primary antibodies
Applications	WB/ELISA
Host / Source	Rabbit
Reactivity	Human/Rat/Mouse

PRODUCT PROPERTIES

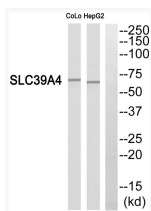
Clonality	Polyclonal
Concentration	1 mg/mL
Conjugation	Unconjugated
Purification	The antibody was affinity-purified from rabbit antiserum by affinity-chromatography using epitope-specific immunogen.
Dilution Range	WB 1:500-1:2000 ELISA 1:40000
Formulation	Liquid in PBS containing 50% Glycerol, 0.5% BSA and 0.02% Sodium Azide.
Isotype	IgG
Molecular Weight	Observed: 68kD
Storage Instruction	Store at -20°C for up to 1 year from the date of receipt, and avoid repeat freeze-thaw cycles.

TARGET INFORMATION

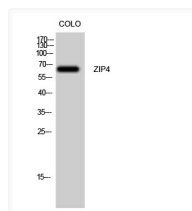
Gene ID	55630
Gene Symbol	SLC39A4
UniProt ID	S39A4_HUMAN
Immunogen Region	431-480 aa
Specificity	ZIP4 Polyclonal Antibody detects endogenous levels of ZIP4 protein.

ADDITIONAL INFORMATION

Note **STRICTLY FOR FURTHER SCIENTIFIC RESEARCH USE ONLY (RUO). MUST NOT TO BE USED IN DIAGNOSTIC OR THERAPEUTIC APPLICATIONS.**



Western blot analysis of SLC39A4 Antibody. The lane on the right is blocked with the SLC39A4 peptide.



Western blot analysis of Colo cells using ZIP4 Polyclonal Antibody. Secondary antibody was diluted at 1:20000