

Anti-ZNF106 antibody (1833-1882 aa) (STJ96306)

GENERAL INFORMATION

Product Type	Primary antibodies
Applications	WB/ELISA
Host / Source	Rabbit
Reactivity	Human/Mouse/Monkey

PRODUCT PROPERTIES

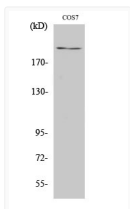
Clonality	Polyclonal
Concentration	1 mg/mL
Conjugation	Unconjugated
Purification	The antibody was affinity-purified from rabbit antiserum by affinity-chromatography using epitope-specific immunogen.
Dilution Range	WB 1:500-1:2000 ELISA 1:10000
Formulation	Liquid in PBS containing 50% Glycerol, 0.5% BSA and 0.02% Sodium Azide.
Isotype	IgG
Molecular Weight	Observed: 209kD
Storage Instruction	Store at -20°C for up to 1 year from the date of receipt, and avoid repeat freeze-thaw cycles.

TARGET INFORMATION

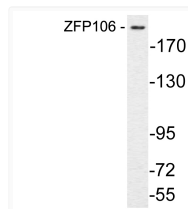
Gene ID	64397
Gene Symbol	ZNF106
UniProt ID	ZN106_HUMAN
Immunogen Region	1833-1882 aa
Specificity	ZFP106 Polyclonal Antibody detects endogenous levels of ZFP106 protein.

ADDITIONAL INFORMATION

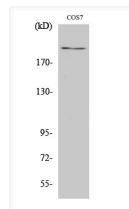
Note **STRICTLY FOR FURTHER SCIENTIFIC RESEARCH USE ONLY (RUO). MUST NOT TO BE USED IN DIAGNOSTIC OR THERAPEUTIC APPLICATIONS.**



Western blot analysis of COS7 cells using ZFP106 Polyclonal Antibody. Secondary antibody was diluted at 1:20000



Western blot analysis of lysate from COS7 cells, using ZFP106 antibody.



Western blot analysis of various cells using ZFP106 Polyclonal Antibody. Secondary antibody was diluted at 1:20000