

Anti-XRCC4 antibody (261-310 aa) (STJ96286)

GENERAL INFORMATION

Product Type	Primary antibodies
Applications	WB/ELISA
Host / Source	Rabbit
Reactivity	Human/Rat/Mouse

PRODUCT PROPERTIES

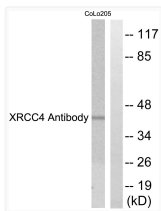
Clonality	Polyclonal
Concentration	1 mg/mL
Conjugation	Unconjugated
Purification	The antibody was affinity-purified from rabbit antiserum by affinity-chromatography using epitope-specific immunogen.
Dilution Range	WB 1:500-1:2000 ELISA 1:20000
Formulation	Liquid in PBS containing 50% Glycerol, 0.5% BSA and 0.02% Sodium Azide.
Isotype	IgG
Molecular Weight	Observed: 40kD
Storage Instruction	Store at -20°C for up to 1 year from the date of receipt, and avoid repeat freeze-thaw cycles.

TARGET INFORMATION

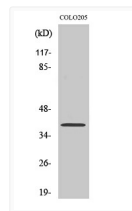
Gene ID	7518
Gene Symbol	XRCC4
UniProt ID	XRCC4_HUMAN
Immunogen Region	261-310 aa
Specificity	XRCC4 Polyclonal Antibody detects endogenous levels of XRCC4 protein.

ADDITIONAL INFORMATION

Note **STRICTLY FOR FURTHER SCIENTIFIC RESEARCH USE ONLY (RUO). MUST NOT TO BE USED IN DIAGNOSTIC OR THERAPEUTIC APPLICATIONS.**



Western blot analysis of lysates from COLO205 cells, using XRCC4 Antibody. The lane on the right is blocked with the synthesized peptide.



Western blot analysis of various cells using XRCC4 Polyclonal Antibody. Secondary antibody was diluted at 1:20000