

Anti-ARHGEF3 antibody (456-505 aa) (STJ96281)

GENERAL INFORMATION

Product Type	Primary antibodies
Applications	WB/IHC/IF/ELISA
Host / Source	Rabbit
Reactivity	Human/Mouse/Rat

PRODUCT PROPERTIES

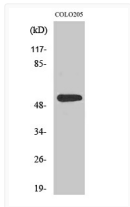
Clonality	Polyclonal
Concentration	1 mg/mL
Conjugation	Unconjugated
Purification	The antibody was affinity-purified from rabbit antiserum by affinity-chromatography using epitope-specific immunogen.
Dilution Range	WB 1:500-1:2000 IHC-P 1:50-300 ELISA 1:20000 IF 1:50-200
Formulation	Liquid in PBS containing 50% Glycerol, 0.5% BSA and 0.02% Sodium Azide.
Isotype	IgG
Molecular Weight	Observed: 55kD
Storage Instruction	Store at -20°C for up to 1 year from the date of receipt, and avoid repeat freeze-thaw cycles.

TARGET INFORMATION

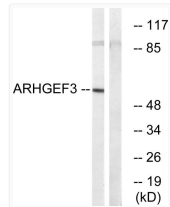
Gene ID	50650
Gene Symbol	ARHGEF3
UniProt ID	ARHG3_HUMAN
Immunogen Region	456-505 aa
Specificity	XPLN Polyclonal Antibody detects endogenous levels of XPLN protein.

ADDITIONAL INFORMATION

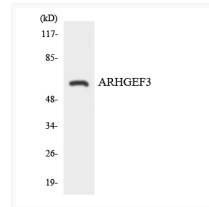
Note STRICTLY FOR FURTHER SCIENTIFIC RESEARCH USE ONLY (RUO). MUST NOT TO BE USED IN DIAGNOSTIC OR THERAPEUTIC APPLICATIONS.



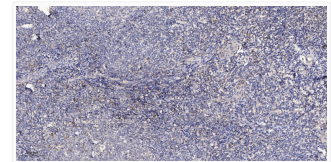
Western Blot analysis of various cells using XPLN Polyclonal Antibody. Secondary antibody was STJ96281



Western blot analysis of lysates from COLO cells, using ARHGEF3 Antibody. The lane on the right was blocked with the STJ96281



Western blot analysis of the lysates from HeLa cells using ARHGEF3 antibody. STJ96281



Immunohistochemical analysis of paraffin-embedded human tonsil. 1, Antibody was diluted at 1:200 (4° overnight). 2, STJ96281