

Anti-WASF1 antibody (91-140 aa) (STJ96262)

GENERAL INFORMATION

Product Type	Primary antibodies
Applications	WB/IHC/IF/ELISA
Host / Source	Rabbit
Reactivity	Human/Mouse/Rat

PRODUCT PROPERTIES

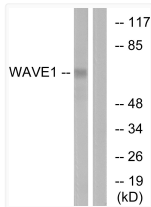
Clonality	Polyclonal
Concentration	1 mg/mL
Conjugation	Unconjugated
Purification	The antibody was affinity-purified from rabbit antiserum by affinity-chromatography using epitope-specific immunogen.
Dilution Range	WB 1:500-1:2000 IHC 1:100-1:300 IF 1:200-1:1000 ELISA 1:40000
Formulation	Liquid in PBS containing 50% Glycerol, 0.5% BSA and 0.02% Sodium Azide.
Isotype	IgG
Molecular Weight	Observed: 70kD
Storage Instruction	Store at -20°C for up to 1 year from the date of receipt, and avoid repeat freeze-thaw cycles.

TARGET INFORMATION

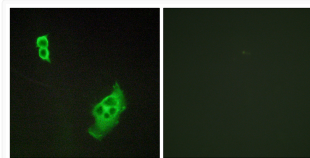
Gene ID	8936
Gene Symbol	WASF1
UniProt ID	WASF1_HUMAN
Immunogen Region	91-140 aa
Specificity	WAVE1 Polyclonal Antibody detects endogenous levels of WAVE1 protein.

ADDITIONAL INFORMATION

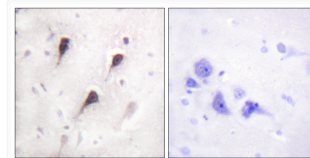
Note STRICTLY FOR FURTHER SCIENTIFIC RESEARCH USE ONLY (RUO). MUST NOT TO BE USED IN DIAGNOSTIC OR THERAPEUTIC APPLICATIONS.



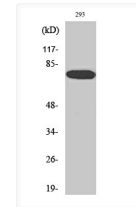
Western blot analysis of lysates from 293 cells, treated with insulin 0.01U/ml 15', using WAVE1 Antibody. The lane on the right is blocked with the synthesized peptide.



Immunofluorescence analysis of COS7 cells, using WAVE1 Antibody. The picture on the right is blocked with the synthesized peptide.



Immunohistochemistry analysis of paraffin-embedded human brain tissue, using WAVE1 Antibody. The picture on the right is blocked with the synthesized peptide.



Western blot analysis of various cells using WAVE1 Polyclonal Antibody. Secondary antibody was diluted at 1:20000