

Anti-USP38 antibody (551-600 aa) (STJ96202)

GENERAL INFORMATION

Product Type	Primary antibodies
Applications	WB/ELISA
Host / Source	Rabbit
Reactivity	Human/Rat/Mouse

PRODUCT PROPERTIES

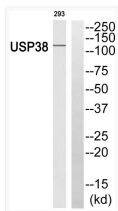
Clonality	Polyclonal
Concentration	1 mg/mL
Conjugation	Unconjugated
Purification	The antibody was affinity-purified from rabbit antiserum by affinity-chromatography using epitope-specific immunogen.
Dilution Range	WB 1:500-1:2000 ELISA 1:10000
Formulation	Liquid in PBS containing 50% Glycerol, 0.5% BSA and 0.02% Sodium Azide.
Isotype	IgG
Molecular Weight	Observed: 120kD
Storage Instruction	Store at -20°C for up to 1 year from the date of receipt, and avoid repeat freeze-thaw cycles.

TARGET INFORMATION

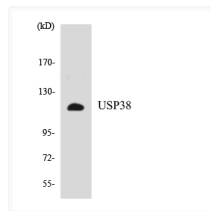
Gene ID	84640
Gene Symbol	USP38
UniProt ID	UBP38_HUMAN
Immunogen Region	551-600 aa
Specificity	USP38 Polyclonal Antibody detects endogenous levels of USP38 protein.

ADDITIONAL INFORMATION

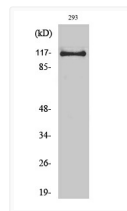
Note **STRICTLY FOR FURTHER SCIENTIFIC RESEARCH USE ONLY (RUO). MUST NOT TO BE USED IN DIAGNOSTIC OR THERAPEUTIC APPLICATIONS.**



Western blot analysis of USP38 Antibody. The lane on the right is blocked with the USP38 peptide.



Western blot analysis of the lysates from HepG2 cells using USP38 antibody.



Western blot analysis of various cells using USP38 Polyclonal Antibody diluted at 1: 1000. Secondary antibody was diluted at 1:20000