

## Anti-NTRK2 antibody (481-530 aa) (STJ96109)

### GENERAL INFORMATION

|               |                     |
|---------------|---------------------|
| Product Type  | Primary antibodies  |
| Applications  | WB/IHC/IF/IHC/ELISA |
| Host / Source | Rabbit              |
| Reactivity    | Human/Mouse/Rat     |

### PRODUCT PROPERTIES

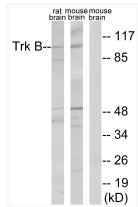
|                     |   |
|---------------------|---|
| Clonality           | Polyclonal  |
| Concentration       | 1 mg/mL   |
| Conjugation         | Unconjugated  |
| Purification        | The antibody was affinity-purified from rabbit antiserum by affinity-chromatography using epitope-specific immunogen. |
| Dilution Range      | WB 1:500-1:2000<br>IHC 1:100-1:300<br>IF 1:200-1:1000<br>ELISA 1:10000  |
| Formulation         | Liquid in PBS containing 50% Glycerol, 0.5% BSA and 0.02% Sodium Azide.   |
| Isotype             | IgG   |
| Molecular Weight    | Observed: 92kD  |
| Storage Instruction | Store at -20°C for up to 1 year from the date of receipt, and avoid repeat freeze-thaw cycles.                        |

### TARGET INFORMATION

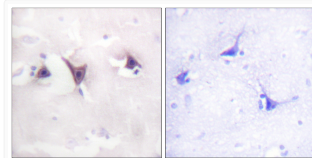
|                  |   |
|------------------|---|
| Gene ID          | <a href="#">4915</a>  |
| Gene Symbol      | <a href="#">NTRK2</a>   |
| UniProt ID       | <a href="#">NTRK2_HUMAN</a>   |
| Immunogen Region | 481-530 aa  |
| Specificity      | Trk B Polyclonal Antibody detects endogenous levels of Trk B protein. |

### ADDITIONAL INFORMATION

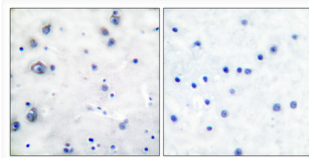
Note STRICTLY FOR FURTHER SCIENTIFIC RESEARCH USE ONLY (RUO). MUST NOT TO BE USED IN DIAGNOSTIC OR THERAPEUTIC APPLICATIONS.



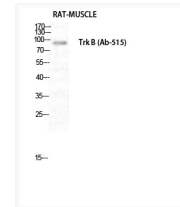
Western blot analysis of lysates from rat brain and mouse brain, treated with PBS 60', using Trk B Antibody. The lane on the right is blocked with the synthesized peptide.



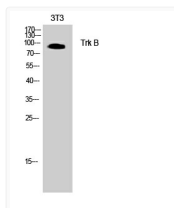
Immunohistochemistry analysis of paraffin-embedded human brain tissue, using Trk B Antibody. The picture on the right is blocked with the synthesized peptide.



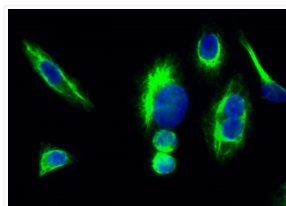
Immunohistochemical analysis of paraffin-embedded Human breast cancer. Antibody was diluted at 1:100 (4°C overnight). High-pressure and temperature Tris-EDTA, pH8.0 was used for antigen retrieval. Negative control (right) obtained from antibody was pre-absorbed by immunogen peptide.



Western blot analysis of RAT-MUSCLE cells using Trk B Polyclonal Antibody diluted at 1: 500. Secondary antibody was diluted at 1:20000.



Western blot analysis of rat brain cells using Trk B Polyclonal Antibody diluted at 1: 500. Secondary antibody was diluted at 1:20000.



Immunofluorescence analysis of Hela cell. 1, Trk B Polyclonal Antibody (green) was diluted at 1:200 (4°C overnight). 2, Goat Anti Rabbit Alexa Fluor 488 Catalog: (NA was diluted at 1:1000 (room temperature, 50min). 3 DAPI (blue) 10min.