

Anti-TRAF3 antibody (240-289 aa) (STJ96083)

GENERAL INFORMATION

Product Type	Primary antibodies
Applications	WB/ELISA
Host / Source	Rabbit
Reactivity	Human/Mouse

PRODUCT PROPERTIES

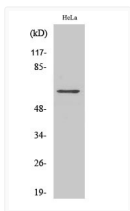
Clonality	Polyclonal
Concentration	1 mg/mL
Conjugation	Unconjugated
Purification	The antibody was affinity-purified from rabbit antiserum by affinity-chromatography using epitope-specific immunogen.
Dilution Range	WB 1:500-1:2000 ELISA 1:20000
Formulation	Liquid in PBS containing 50% Glycerol, 0.5% BSA and 0.02% Sodium Azide.
Isotype	IgG
Molecular Weight	Observed: 64kD
Storage Instruction	Store at -20°C for up to 1 year from the date of receipt, and avoid repeat freeze-thaw cycles.

TARGET INFORMATION

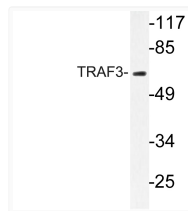
Gene ID	7187
Gene Symbol	TRAF3
UniProt ID	TRAF3_HUMAN
Immunogen Region	240-289 aa
Specificity	TRAF3 Polyclonal Antibody detects endogenous levels of TRAF3 protein.

ADDITIONAL INFORMATION

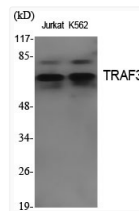
Note STRICTLY FOR FURTHER SCIENTIFIC RESEARCH USE ONLY (RUO). MUST NOT TO BE USED IN DIAGNOSTIC OR THERAPEUTIC APPLICATIONS.



Western blot analysis of COLO205 cells using TRAF3 Polyclonal Antibody. Secondary antibody was diluted at 1:20000



Western blot analysis of lysate from HeLa cells, using TRAF3 antibody.



Western blot analysis of various cells using TRAF3 Polyclonal Antibody. Secondary antibody was diluted at 1:20000