

Anti-TRADD antibody (251-300 aa) (STJ96081)

GENERAL INFORMATION

Product Type	Primary antibodies
Applications	WB/IHC/IF/ELISA
Host / Source	Rabbit
Reactivity	Human/Mouse/Monkey

PRODUCT PROPERTIES

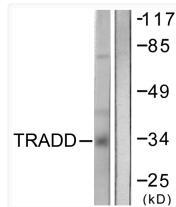
Clonality	Polyclonal
Concentration	1 mg/mL
Conjugation	Unconjugated
Purification	The antibody was affinity-purified from rabbit antiserum by affinity-chromatography using epitope-specific immunogen.
Dilution Range	WB 1:500-1:2000 IHC 1:100-1:300 ELISA 1:10000 IF 1:50-200
Formulation	Liquid in PBS containing 50% Glycerol, 0.5% BSA and 0.02% Sodium Azide.
Isotype	IgG
Molecular Weight	Observed: 34kD
Storage Instruction	Store at -20°C for up to 1 year from the date of receipt, and avoid repeat freeze-thaw cycles.

TARGET INFORMATION

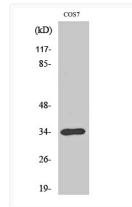
Gene ID	8717
Gene Symbol	TRADD
UniProt ID	TRADD_HUMAN
Immunogen Region	251-300 aa
Specificity	TRADD Polyclonal Antibody detects endogenous levels of TRADD protein.

ADDITIONAL INFORMATION

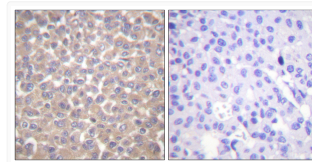
Note STRICTLY FOR FURTHER SCIENTIFIC RESEARCH USE ONLY (RUO). MUST NOT TO BE USED IN DIAGNOSTIC OR THERAPEUTIC APPLICATIONS.



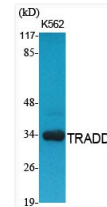
Western blot analysis of lysates from COS7 cells, using TRADD Antibody. The lane on the right is blocked with the synthesized peptide.



Western blot analysis of COS7 cells using TRADD Polyclonal Antibody. Secondary antibody was diluted at 1:20000



Immunohistochemistry analysis of paraffin-embedded human breast carcinoma tissue, using TRADD Antibody. The picture on the right is blocked with the synthesized peptide.



Western blot analysis of various cells using TRADD Polyclonal Antibody. Secondary antibody was diluted at 1:20000