

## Anti-TOMM20 antibody (15-64 aa) (STJ96061)

### GENERAL INFORMATION

Product Type	Primary antibodies
Applications	WB/IF/ELISA
Host / Source	Rabbit
Reactivity	Human/Mouse/Rat

### PRODUCT PROPERTIES

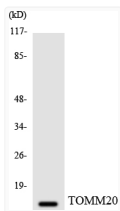
Clonality	Polyclonal
Concentration	1 mg/mL
Conjugation	Unconjugated
Purification	The antibody was affinity-purified from rabbit antiserum by affinity-chromatography using epitope-specific immunogen.
Dilution Range	WB 1:500-2000 IF 1:100-300 ELISA 1:5000-20000
Formulation	Liquid in PBS containing 50% Glycerol, 0.5% BSA and 0.02% Sodium Azide.
Isotype	IgG
Molecular Weight	Observed: 17kD
Storage Instruction	Store at -20°C for up to 1 year from the date of receipt, and avoid repeat freeze-thaw cycles.

### TARGET INFORMATION

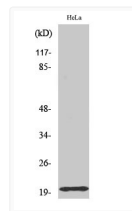
Gene ID	<a href="#">9804</a>
Gene Symbol	<a href="#">TOMM20</a>
UniProt ID	<a href="#">TOM20_HUMAN</a>
Immunogen Region	15-64 aa
Specificity	Tom20 Polyclonal Antibody detects endogenous levels of Tom20 protein.

### ADDITIONAL INFORMATION

Note **STRICTLY FOR FURTHER SCIENTIFIC RESEARCH USE ONLY (RUO). MUST NOT TO BE USED IN DIAGNOSTIC OR THERAPEUTIC APPLICATIONS.**



Western blot analysis of the lysates from HeLa cells using TOMM20 antibody.



Western blot analysis of various cells using Tom20 Polyclonal Antibody diluted at 1: 500. Secondary antibody was diluted at 1:20000