

## Anti-TIEG-1/2 antibody (391-440 aa) (STJ96017)

### GENERAL INFORMATION

Product Type	Primary antibodies
Applications	IHC/IF/ELISA
Host / Source	Rabbit
Reactivity	Human/Mouse/Rat

### PRODUCT PROPERTIES

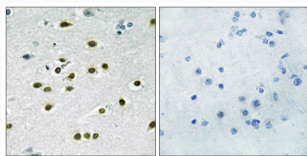
Clonality	Polyclonal
Concentration	1 mg/mL
Conjugation	Unconjugated
Purification	The antibody was affinity-purified from rabbit antiserum by affinity-chromatography using epitope-specific immunogen.
Dilution Range	IHC 1:100-1:300 ELISA 1:5000 IF 1:50-200
Formulation	Liquid in PBS containing 50% Glycerol, 0.5% BSA and 0.02% Sodium Azide.
Isotype	IgG
Molecular Weight	Calculated: 53kD
Storage Instruction	Store at -20°C for up to 1 year from the date of receipt, and avoid repeat freeze-thaw cycles.

### TARGET INFORMATION

Gene ID	<a href="#">7071</a> <a href="#">8462</a>
Gene Symbol	<a href="#">KLF10</a> <a href="#">KLF11</a>
UniProt ID	<a href="#">KLF10_HUMAN</a> <a href="#">KLF11_HUMAN</a>
Immunogen Region	391-440 aa
Specificity	TIEG-1/2 Polyclonal Antibody detects endogenous levels of TIEG-1/2 protein.

### ADDITIONAL INFORMATION

Note STRICTLY FOR FURTHER SCIENTIFIC RESEARCH USE ONLY (RUO). MUST NOT TO BE USED IN DIAGNOSTIC OR THERAPEUTIC APPLICATIONS.



Immunohistochemistry analysis of paraffin-embedded human brain tissue, using KLF10/11 Antibody. The picture on the right is blocked with the synthesized peptide.