

Anti-GTF2H2 antibody (1-50 aa) (STJ95982)

GENERAL INFORMATION

Product Type	Primary antibodies
Applications	WB/IHC/IF/ELISA
Host / Source	Rabbit
Reactivity	Human/Mouse/Rat

PRODUCT PROPERTIES

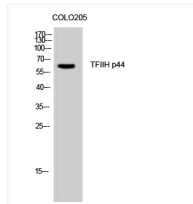
Clonality	Polyclonal
Concentration	1 mg/mL
Conjugation	Unconjugated
Purification	The antibody was affinity-purified from rabbit antiserum by affinity-chromatography using epitope-specific immunogen.
Dilution Range	WB 1:500-1:2000 IHC 1:100-1:300 IF 1:200-1:1000 ELISA 1:40000
Formulation	Liquid in PBS containing 50% Glycerol, 0.5% BSA and 0.02% Sodium Azide.
Isotype	IgG
Molecular Weight	Observed: 62kD
Storage Instruction	Store at -20°C for up to 1 year from the date of receipt, and avoid repeat freeze-thaw cycles.

TARGET INFORMATION

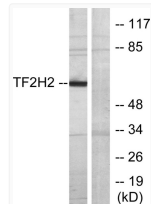
Gene ID	2966
Gene Symbol	GTF2H2
UniProt ID	TF2H2_HUMAN
Immunogen Region	1-50 aa
Specificity	TFIIH p44 Polyclonal Antibody detects endogenous levels of TFIIH p44 protein.

ADDITIONAL INFORMATION

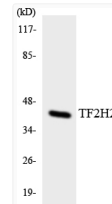
Note **STRICTLY FOR FURTHER SCIENTIFIC RESEARCH USE ONLY (RUO). MUST NOT TO BE USED IN DIAGNOSTIC OR THERAPEUTIC APPLICATIONS.**



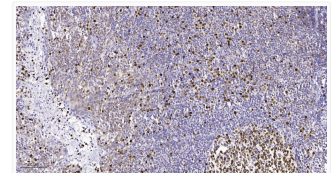
Western Blot analysis of COLO205 cells using TFIIH p44 Polyclonal Antibody on cells with nucleus extracted by Minute™ STJ95982



Western blot analysis of lysates from COLO205 cells, using TF2H2 Antibody. The lane on the right was blocked with the STJ95982



Western blot analysis of the lysates from COLO205 cells using TF2H2 antibody. STJ95982



Immunohistochemical analysis of paraffin-embedded human tonsil. 1, Antibody was diluted at 1:200 (4°C overnight). 2, STJ95982