

## Anti-TFEB antibody (10-59 aa) (STJ95978)

### GENERAL INFORMATION

Product Type	Primary antibodies
Applications	WB/IHC/IF/ELISA
Host / Source	Rabbit
Reactivity	Human/Mouse

### PRODUCT PROPERTIES

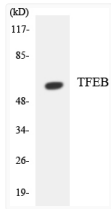
Clonality	Polyclonal
Concentration	1 mg/mL
Conjugation	Unconjugated
Purification	The antibody was affinity-purified from rabbit antiserum by affinity-chromatography using epitope-specific immunogen.
Dilution Range	WB 1:500-1:2000 IHC 1:100-1:300 ELISA 1:20000 IF 1:50-200
Formulation	Liquid in PBS containing 50% Glycerol, 0.5% BSA and 0.02% Sodium Azide.
Isotype	IgG
Molecular Weight	Observed: 65kD
Storage Instruction	Store at -20°C for up to 1 year from the date of receipt, and avoid repeat freeze-thaw cycles.

### TARGET INFORMATION

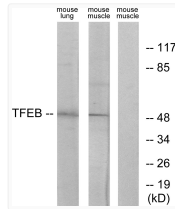
Gene ID	<a href="#">7942</a>
Gene Symbol	<a href="#">TFEB</a>
UniProt ID	<a href="#">TFEB_HUMAN</a>
Immunogen Region	10-59 aa
Specificity	TFEB Polyclonal Antibody detects endogenous levels of TFEB protein.

### ADDITIONAL INFORMATION

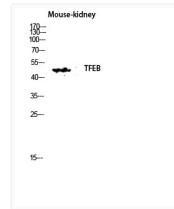
Note STRICTLY FOR FURTHER SCIENTIFIC RESEARCH USE ONLY (RUO). MUST NOT TO BE USED IN DIAGNOSTIC OR THERAPEUTIC APPLICATIONS.



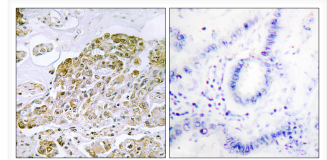
Western blot analysis of the lysates from Jurkat cells using TFEB antibody.



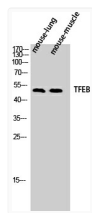
Western blot analysis of lysates from mouse lung and mouse muscle cells, using TFEB Antibody. The lane on the right is blocked with the synthesized peptide.



Western blot analysis of Mouse-kidney lysis using TFEB antibody. Antibody was diluted at 1:500



Immunohistochemistry analysis of paraffin-embedded human lung carcinoma tissue, using TFEB Antibody. The picture on the right is blocked with the synthesized peptide.



Western blot analysis of mouse-lung mouse-muscle cells using TFEB Polyclonal Antibody diluted at 1: 500