

## Anti-ETV6 antibody (371-420 aa) (STJ95964)

### GENERAL INFORMATION

Product Type	Primary antibodies
Applications	WB/IHC/IF/ELISA
Host / Source	Rabbit
Reactivity	Human/Mouse/Rat

### PRODUCT PROPERTIES

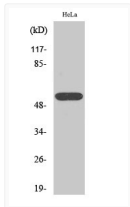
Clonality	Polyclonal
Concentration	1 mg/mL
Conjugation	Unconjugated
Purification	The antibody was affinity-purified from rabbit antiserum by affinity-chromatography using epitope-specific immunogen.
Dilution Range	WB 1:500-1:2000 IHC 1:100-1:300 IF 1:200-1:1000 ELISA 1:5000
Formulation	Liquid in PBS containing 50% Glycerol, 0.5% BSA and 0.02% Sodium Azide.
Isotype	IgG
Molecular Weight	Observed: 53kD
Storage Instruction	Store at -20°C for up to 1 year from the date of receipt, and avoid repeat freeze-thaw cycles.

### TARGET INFORMATION

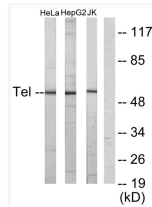
Gene ID	<a href="#">2120</a>
Gene Symbol	<a href="#">ETV6</a>
UniProt ID	<a href="#">ETV6_HUMAN</a>
Immunogen Region	371-420 aa
Specificity	TEL Polyclonal Antibody detects endogenous levels of TEL protein.

### ADDITIONAL INFORMATION

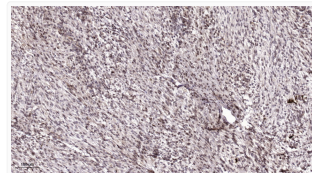
Note **STRICTLY FOR FURTHER SCIENTIFIC RESEARCH USE ONLY (RUO). MUST NOT TO BE USED IN DIAGNOSTIC OR THERAPEUTIC APPLICATIONS.**



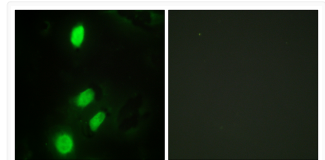
Western blot analysis of various cells using TEL polyclonal antibody STJ95964



Western blot analysis of lysates from HeLa, HepG2, and Jurkat cells, using ETV6 Antibody. The lane on the right is STJ95964



Immunohistochemical analysis of paraffin-embedded human colon cancer. 1, Antibody was diluted at 1:200 (4° overnight). STJ95964



Immunofluorescence analysis of HeLa cells using ETV6 Antibody. The picture on the right is blocked with the synthesized STJ95964