

## Anti-TBX15/18 antibody (161-210 aa) (STJ95931)

### GENERAL INFORMATION

Product Type	Primary antibodies
Applications	WB/IHC/IF/ELISA
Host / Source	Rabbit
Reactivity	Human/Mouse

### PRODUCT PROPERTIES

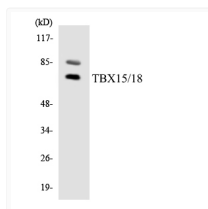
Clonality	Polyclonal
Concentration	1 mg/mL
Conjugation	Unconjugated
Purification	The antibody was affinity-purified from rabbit antiserum by affinity-chromatography using epitope-specific immunogen.
Dilution Range	WB 1:500-1:2000 IHC 1:100-1:300 IF 1:200-1:1000 ELISA 1:20000
Formulation	Liquid in PBS containing 50% Glycerol, 0.5% BSA and 0.02% Sodium Azide.
Isotype	IgG
Molecular Weight	Observed: 64kD
Storage Instruction	Store at -20°C for up to 1 year from the date of receipt, and avoid repeat freeze-thaw cycles.

### TARGET INFORMATION

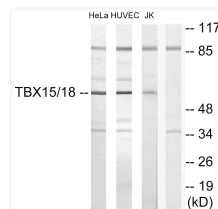
Gene ID	<a href="#">6913</a> <a href="#">9096</a>
Gene Symbol	<a href="#">TBX15</a> <a href="#">TBX18</a>
UniProt ID	<a href="#">TBX15_HUMAN</a> <a href="#">TBX18_HUMAN</a>
Immunogen Region	161-210 aa
Specificity	TBX15/18 Polyclonal Antibody detects endogenous levels of TBX15/18 protein.

### ADDITIONAL INFORMATION

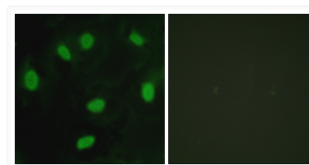
Note **STRICTLY FOR FURTHER SCIENTIFIC RESEARCH USE ONLY (RUO). MUST NOT TO BE USED IN DIAGNOSTIC OR THERAPEUTIC APPLICATIONS.**



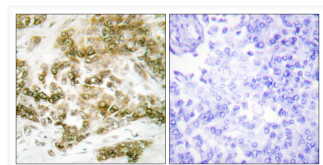
Western blot analysis of the lysates from HeLa cells using TBX15/18 antibody.



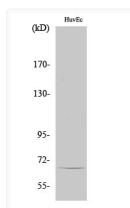
Western blot analysis of lysates from HUVEC, HeLa, and Jurkat cells, using TBX15/18 Antibody. The lane on the right is blocked with the synthesized peptide.



Immunofluorescence analysis of HeLa cells, using TBX15/18 Antibody. The picture on the right is blocked with the synthesized peptide.



Immunohistochemistry analysis of paraffin-embedded human breast carcinoma tissue, using TBX15/18 Antibody. The picture on the right is blocked with the synthesized peptide.



Western blot analysis of various cells using TBX15/18 Polyclonal Antibody cells nucleus extracted by Minute TM Cytoplasmic and Nuclear Fractionation kit (SC-003, Inventibiotech, MN, USA).