

Anti-TAS2R14 antibody (229-278 aa) (STJ95871)

GENERAL INFORMATION

Product Type	Primary antibodies
Applications	WB/IHC
Host / Source	Rabbit
Reactivity	Human/Rat/Mouse

PRODUCT PROPERTIES

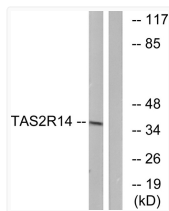
Clonality	Polyclonal
Concentration	1 mg/mL
Conjugation	Unconjugated
Purification	The antibody was affinity-purified from rabbit antiserum by affinity-chromatography using epitope-specific immunogen.
Dilution Range	WB 1:500-2000 IHC-P 1:50-300
Formulation	Liquid in PBS containing 50% Glycerol, 0.5% BSA and 0.02% Sodium Azide.
Isotype	IgG
Molecular Weight	Observed: 38kD
Storage Instruction	Store at -20°C for up to 1 year from the date of receipt, and avoid repeat freeze-thaw cycles.

TARGET INFORMATION

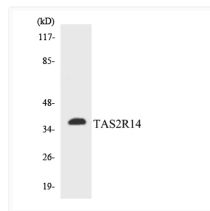
Gene ID	50840
Gene Symbol	TAS2R14
UniProt ID	T2R14_HUMAN
Immunogen Region	229-278 aa
Specificity	T2R14 Polyclonal Antibody detects endogenous levels of T2R14 protein.

ADDITIONAL INFORMATION

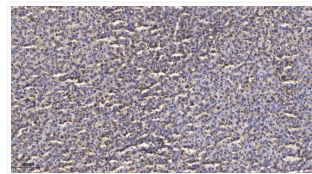
Note **STRICTLY FOR FURTHER SCIENTIFIC RESEARCH USE ONLY (RUO). MUST NOT TO BE USED IN DIAGNOSTIC OR THERAPEUTIC APPLICATIONS.**



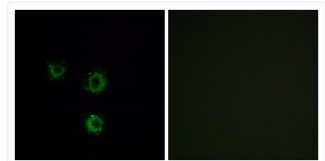
Western blot analysis of lysates from MCF-7 cells, using TAS2R14 Antibody. The lane on the right was blocked with the STJ95871



Western blot analysis of the lysates from COLO205 cells using TAS2R14 antibody.



Immunohistochemical analysis of paraffin-embedded human liver cancer. 1, Antibody was diluted at 1:200 (4° overnight). STJ95871



Immunofluorescence analysis of MCF7 cells using TAS2R14 Antibody. The picture on the right is blocked with the STJ95871