

Anti-TAS2R13 antibody (123-172 aa) (STJ95870)

GENERAL INFORMATION

Product Type	Primary antibodies
Applications	WB/ELISA/IHC
Host / Source	Rabbit
Reactivity	Human/Rat/Mouse

PRODUCT PROPERTIES

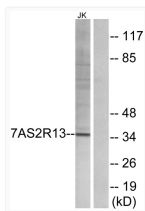
Clonality	Polyclonal
Concentration	1 mg/mL
Conjugation	Unconjugated
Purification	The antibody was affinity-purified from rabbit antiserum by affinity-chromatography using epitope-specific immunogen.
Dilution Range	WB 1:500-2000 IHC-P 1:50-300 ELISA 2000-20000
Formulation	Liquid in PBS containing 50% Glycerol, 0.5% BSA and 0.02% Sodium Azide.
Isotype	IgG
Molecular Weight	Observed: 35kD
Storage Instruction	Store at -20°C for up to 1 year from the date of receipt, and avoid repeat freeze-thaw cycles.

TARGET INFORMATION

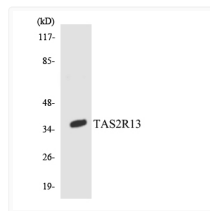
Gene ID	50838
Gene Symbol	TAS2R13
UniProt ID	T2R13_HUMAN
Immunogen Region	123-172 aa
Specificity	T2R13 Polyclonal Antibody detects endogenous levels of T2R13 protein.

ADDITIONAL INFORMATION

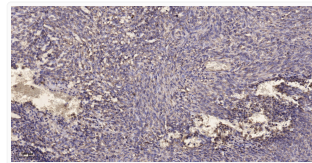
Note STRICTLY FOR FURTHER SCIENTIFIC RESEARCH USE ONLY (RUO). MUST NOT TO BE USED IN DIAGNOSTIC OR THERAPEUTIC APPLICATIONS.



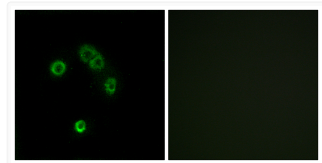
Western blot analysis of lysates from Jurkat cells, using TAS2R13 Antibody. The lane on the right was blocked with the STJ95870



Western blot analysis of the lysates from COLO205 cells using TAS2R13 antibody. STJ95870



Immunohistochemical analysis of paraffin-embedded human colon cancer. 1, Antibody was diluted at 1:200 (4° overnight). STJ95870



Immunofluorescence analysis of MCF7 cells using TAS2R13 Antibody. The picture on the right is blocked with the STJ95870