

Anti-SVOP antibody (271-320 aa) (STJ95839)

GENERAL INFORMATION

Product Type	Primary antibodies
Applications	WB/IHC/IF/ELISA
Host / Source	Rabbit
Reactivity	Human/Mouse/Rat

PRODUCT PROPERTIES

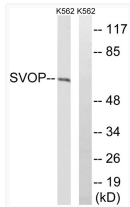
Clonality	Polyclonal
Concentration	1 mg/mL
Conjugation	Unconjugated
Purification	The antibody was affinity-purified from rabbit antiserum by affinity-chromatography using epitope-specific immunogen.
Dilution Range	WB 1:500-1:2000 IHC 1:100-1:300 ELISA 1:40000 IF 1:50-200
Formulation	Liquid in PBS containing 50% Glycerol, 0.5% BSA and 0.02% Sodium Azide.
Isotype	IgG
Molecular Weight	Observed: 61kD
Storage Instruction	Store at -20°C for up to 1 year from the date of receipt, and avoid repeat freeze-thaw cycles.

TARGET INFORMATION

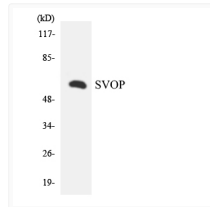
Gene ID	55530
Gene Symbol	SVOP
UniProt ID	SVOP_HUMAN
Immunogen Region	271-320 aa
Specificity	SVOP Polyclonal Antibody detects endogenous levels of SVOP protein.

ADDITIONAL INFORMATION

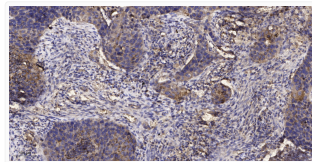
Note STRICTLY FOR FURTHER SCIENTIFIC RESEARCH USE ONLY (RUO). MUST NOT TO BE USED IN DIAGNOSTIC OR THERAPEUTIC APPLICATIONS.



Western blot analysis of lysates from K562 cells, using SVOP Antibody. The lane on the right was blocked with the STJ95839



Western blot analysis of the lysates from Jurkat cells using SVOP antibody. STJ95839



Immunohistochemical analysis of paraffin-embedded human squamous cell carcinoma of lung. 1, Antibody was diluted at STJ95839