

Anti-MMP3 antibody (421-470 aa) (STJ95830)

GENERAL INFORMATION

Product Type	Primary antibodies
Applications	WB/IHC/IF/ELISA
Host / Source	Rabbit
Reactivity	Human/Mouse/Rat

PRODUCT PROPERTIES

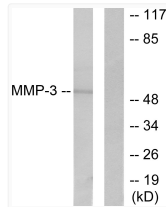
Clonality	Polyclonal
Concentration	1 mg/mL
Conjugation	Unconjugated
Purification	The antibody was affinity-purified from rabbit antiserum by affinity-chromatography using epitope-specific immunogen.
Dilution Range	WB 1:500-1:2000 IHC 1:100-1:300 IF 1:200-1:1000 ELISA 1:10000
Formulation	Liquid in PBS containing 50% Glycerol, 0.5% BSA and 0.02% Sodium Azide.
Isotype	IgG
Molecular Weight	Observed: 53kD
Storage Instruction	Store at -20°C for up to 1 year from the date of receipt, and avoid repeat freeze-thaw cycles.

TARGET INFORMATION

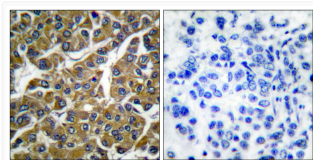
Gene ID	4314
Gene Symbol	MMP3
UniProt ID	MMP3_HUMAN
Immunogen Region	421-470 aa
Specificity	MMP-3 Polyclonal Antibody detects endogenous levels of MMP-3 protein.

ADDITIONAL INFORMATION

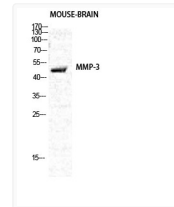
Note STRICTLY FOR FURTHER SCIENTIFIC RESEARCH USE ONLY (RUO). MUST NOT TO BE USED IN DIAGNOSTIC OR THERAPEUTIC APPLICATIONS.



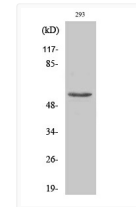
Western blot analysis of lysates from 293 cells, using MMP-3 Antibody. The lane on the right is blocked with the synthesized peptide.



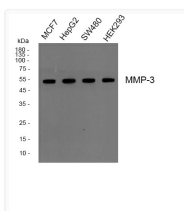
Immunohistochemistry analysis of paraffin-embedded human breast carcinoma tissue, using MMP-3 Antibody. The picture on the right is blocked with the synthesized peptide.



Western blot analysis of various cells using MMP-3 Polyclonal Antibody diluted at 1 : 2000



Western blot analysis of 293 cells using MMP-3 Polyclonal Antibody diluted at 1 : 2000



Western blot analysis of MMP-3 Polyclonal Antibody, using HepG2, MCF7, SW480, HEK293 cell, 4°C over night, secondary antibody (cat: NA) was diluted at 1:10000, 37°C 1hour.