

## Anti-STMN3 antibody (61-110 aa) (STJ95821)

### GENERAL INFORMATION

Product Type	Primary antibodies
Applications	WB/ELISA/IHC
Host / Source	Rabbit
Reactivity	Human/Mouse/Rat

### PRODUCT PROPERTIES

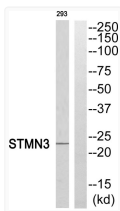
Clonality	Polyclonal
Concentration	1 mg/mL
Conjugation	Unconjugated
Purification	The antibody was affinity-purified from rabbit antiserum by affinity-chromatography using epitope-specific immunogen.
Dilution Range	WB 1:500-2000 IHC-P 1:50-300 ELISA 2000-20000
Formulation	Liquid in PBS containing 50% Glycerol, 0.5% BSA and 0.02% Sodium Azide.
Isotype	IgG
Molecular Weight	Observed: 22kD
Storage Instruction	Store at -20°C for up to 1 year from the date of receipt, and avoid repeat freeze-thaw cycles.

### TARGET INFORMATION

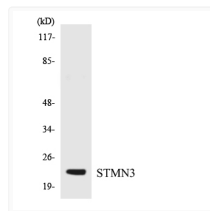
Gene ID	<a href="#">50861</a>
Gene Symbol	<a href="#">STMN3</a>
UniProt ID	<a href="#">STMN3_HUMAN</a>
Immunogen Region	61-110 aa
Specificity	Stathmin-3 Polyclonal Antibody detects endogenous levels of Stathmin-3 protein.

### ADDITIONAL INFORMATION

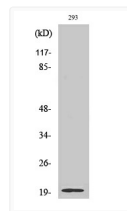
Note STRICTLY FOR FURTHER SCIENTIFIC RESEARCH USE ONLY (RUO). MUST NOT TO BE USED IN DIAGNOSTIC OR THERAPEUTIC APPLICATIONS.



Western blot analysis of STMN3 Antibody. The lane on the right is blocked with the STMN3 peptide.



Western blot analysis of the lysates from K562 cells using STMN3 antibody.



Western blot analysis of various cells using Stathmin-3 Polyclonal Antibody