

## Anti-STAT2 antibody (656-705 aa) (STJ95807)

### GENERAL INFORMATION

Product Type	Primary antibodies
Applications	WB/IP/IHC/IF/ELISA
Host / Source	Rabbit
Reactivity	Human/Mouse/Rat

### PRODUCT PROPERTIES

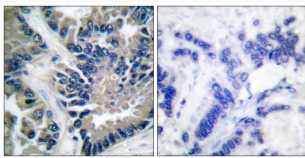
Clonality	Polyclonal
Concentration	1 mg/mL
Conjugation	Unconjugated
Purification	The antibody was affinity-purified from rabbit antiserum by affinity-chromatography using epitope-specific immunogen.
Dilution Range	WB 1:500-1:2000 IHC 1:100-1:300 ELISA 1:5000 IF 1:50-200
Formulation	Liquid in PBS containing 50% Glycerol, 0.5% BSA and 0.02% Sodium Azide.
Isotype	IgG
Molecular Weight	Observed: 113kD
Storage Instruction	Store at -20°C for up to 1 year from the date of receipt, and avoid repeat freeze-thaw cycles.

### TARGET INFORMATION

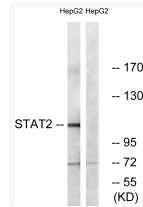
Gene ID	<a href="#">6773</a>
Gene Symbol	<a href="#">STAT2</a>
UniProt ID	<a href="#">STAT2_HUMAN</a>
Immunogen Region	656-705 aa
Specificity	Stat2 Polyclonal Antibody detects endogenous levels of Stat2 protein.

### ADDITIONAL INFORMATION

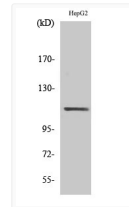
Note STRICTLY FOR FURTHER SCIENTIFIC RESEARCH USE ONLY (RUO). MUST NOT TO BE USED IN DIAGNOSTIC OR THERAPEUTIC APPLICATIONS.



Immunohistochemistry analysis of paraffin-embedded human lung carcinoma tissue, using STAT2 Antibody. The picture on the right is blocked with the synthesized peptide.



Western blot analysis of lysates from HepG2, using STAT2 Antibody. The lane on the right is blocked with the synthesized peptide.



Western blot analysis of various cells using Stat2 Polyclonal Antibody