

## Anti-SRY antibody (51-100 aa) (STJ95789)

### GENERAL INFORMATION

|               |                    |
|---------------|--------------------|
| Product Type  | Primary antibodies |
| Applications  | WB/IHC/IF/ELISA    |
| Host / Source | Rabbit             |
| Reactivity    | Human/Rat/Mouse    |

### PRODUCT PROPERTIES

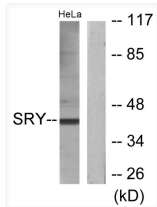
|                     |   |
|---------------------|---|
| Clonality           | Polyclonal  |
| Concentration       | 1 mg/mL   |
| Conjugation         | Unconjugated  |
| Purification        | The antibody was affinity-purified from rabbit antiserum by affinity-chromatography using epitope-specific immunogen. |
| Dilution Range      | WB 1:500-1:2000<br>IHC 1:100-1:300<br>ELISA 1:20000<br>IF 1:50-200  |
| Formulation         | Liquid in PBS containing 50% Glycerol, 0.5% BSA and 0.02% Sodium Azide.   |
| Isotype             | IgG   |
| Molecular Weight    | Observed: 37kD  |
| Storage Instruction | Store at -20°C for up to 1 year from the date of receipt, and avoid repeat freeze-thaw cycles.                        |

### TARGET INFORMATION

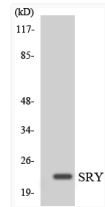
|                  |   |
|------------------|---|
| Gene ID          | <a href="#">6736</a>  |
| Gene Symbol      | <a href="#">SRY</a>   |
| UniProt ID       | <a href="#">SRY_HUMAN</a>   |
| Immunogen Region | 51-100 aa   |
| Specificity      | SRY Polyclonal Antibody detects endogenous levels of SRY protein. |

### ADDITIONAL INFORMATION

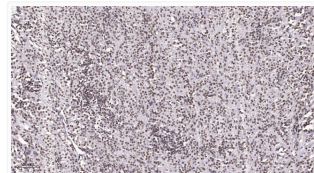
Note STRICTLY FOR FURTHER SCIENTIFIC RESEARCH USE ONLY (RUO). MUST NOT TO BE USED IN DIAGNOSTIC OR THERAPEUTIC APPLICATIONS.



Western blot analysis of lysates from HeLa cells, using SRY Antibody. The lane on the right was blocked with the STJ95789



Western blot analysis of the lysates from K562 cells using SRY antibody. STJ95789



Immunohistochemical analysis of paraffin-embedded human small intestinal stromal tumor. 1, Tris-EDTA, pH 9.0 was used STJ95789