

Anti-SMYD2 antibody (99-148 aa) (STJ95715)

GENERAL INFORMATION

Product Type	Primary antibodies
Applications	WB/ELISA/IHC
Host / Source	Rabbit
Reactivity	Human/Mouse/Rat

PRODUCT PROPERTIES

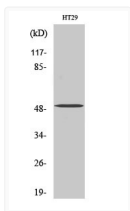
Clonality	Polyclonal
Concentration	1 mg/mL
Conjugation	Unconjugated
Purification	The antibody was affinity-purified from rabbit antiserum by affinity-chromatography using epitope-specific immunogen.
Dilution Range	WB 1:500-2000 IHC-P 1:50-300 ELISA 2000-20000
Formulation	Liquid in PBS containing 50% Glycerol, 0.5% BSA and 0.02% Sodium Azide.
Isotype	IgG
Molecular Weight	Observed: 50kD
Storage Instruction	Store at -20°C for up to 1 year from the date of receipt, and avoid repeat freeze-thaw cycles.

TARGET INFORMATION

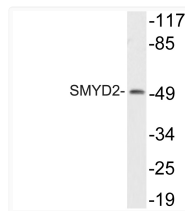
Gene ID	56950
Gene Symbol	SMYD2
UniProt ID	SMYD2_HUMAN
Immunogen Region	99-148 aa
Specificity	SMYD2 Polyclonal Antibody detects endogenous levels of SMYD2 protein.

ADDITIONAL INFORMATION

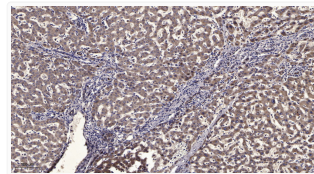
Note STRICTLY FOR FURTHER SCIENTIFIC RESEARCH USE ONLY (RUO). MUST NOT TO BE USED IN DIAGNOSTIC OR THERAPEUTIC APPLICATIONS.



Western blot analysis of various cells using SMYD2 polyclonal antibody diluted at 1:2000 using SMYD2 antibody, STJ95715



Western blot analysis of lysate from HT29 cells, using SMYD2 antibody, STJ95715



Immunohistochemical analysis of paraffin-embedded human liver cancer. 1, Antibody was diluted at 1:200 (4° overnight), STJ95715