

Anti-SLC5A3 antibody (221-270 aa) (STJ95709)

GENERAL INFORMATION

Product Type	Primary antibodies
Applications	WB/ELISA/IHC
Host / Source	Rabbit
Reactivity	Human/Mouse/Rat

PRODUCT PROPERTIES

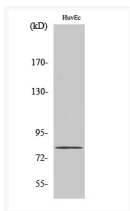
Clonality	Polyclonal
Concentration	1 mg/mL
Conjugation	Unconjugated
Purification	The antibody was affinity-purified from rabbit antiserum by affinity-chromatography using epitope-specific immunogen.
Dilution Range	WB 1:500-2000 IHC-P 1:50-300 ELISA 2000-20000
Formulation	Liquid in PBS containing 50% Glycerol, 0.5% BSA and 0.02% Sodium Azide.
Isotype	IgG
Molecular Weight	Observed: 80kD
Storage Instruction	Store at -20°C for up to 1 year from the date of receipt, and avoid repeat freeze-thaw cycles.

TARGET INFORMATION

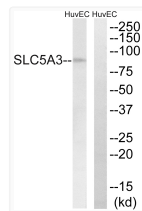
Gene ID	6526
Gene Symbol	SLC5A3
UniProt ID	SC5A3_HUMAN
Immunogen Region	221-270 aa
Specificity	SMIT Polyclonal Antibody detects endogenous levels of SMIT protein.

ADDITIONAL INFORMATION

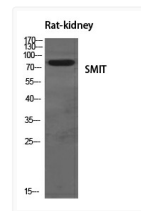
Note STRICTLY FOR FURTHER SCIENTIFIC RESEARCH USE ONLY (RUO). MUST NOT TO BE USED IN DIAGNOSTIC OR THERAPEUTIC APPLICATIONS.



Western blot analysis of HuvEc cells using SMIT Polyclonal Antibody diluted at 1: 500



Western blot analysis of lysates from HUVEC cells, using SLC5A3 Antibody. The lane on the right is blocked with the synthesized peptide.



Western blot analysis of various cells using SMIT Polyclonal Antibody diluted at 1: 500