

Anti-HDAC3 antibody (379-428 aa) (STJ95704)

GENERAL INFORMATION

Product Type	Primary antibodies
Applications	WB/IHC/IF/ELISA
Host / Source	Rabbit
Reactivity	Human/Mouse/Rat/Monkey

PRODUCT PROPERTIES

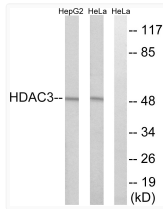
Clonality	Polyclonal
Concentration	1 mg/mL
Conjugation	Unconjugated
Purification	The antibody was affinity-purified from rabbit antiserum by affinity-chromatography using epitope-specific immunogen.
Dilution Range	WB 1:500-1:2000 IHC 1:100-1:300 IF 1:200-1:1000 ELISA 1:20000
Formulation	Liquid in PBS containing 50% Glycerol, 0.5% BSA and 0.02% Sodium Azide.
Isotype	IgG
Molecular Weight	Observed: 50kD
Storage Instruction	Store at -20°C for up to 1 year from the date of receipt, and avoid repeat freeze-thaw cycles.

TARGET INFORMATION

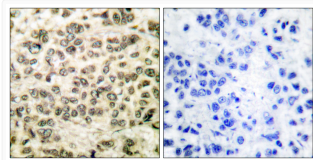
Gene ID	8841
Gene Symbol	HDAC3
UniProt ID	HDAC3_HUMAN
Immunogen Region	379-428 aa
Specificity	SMAP45 Polyclonal Antibody detects endogenous levels of SMAP45 protein.

ADDITIONAL INFORMATION

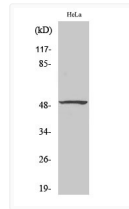
Note STRICTLY FOR FURTHER SCIENTIFIC RESEARCH USE ONLY (RUO). MUST NOT TO BE USED IN DIAGNOSTIC OR THERAPEUTIC APPLICATIONS.



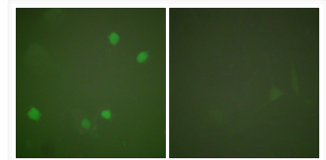
Western blot analysis of lysates from HepG2 and HeLa cells, using HDAC3 Antibody. The lane on the right is blocked with the synthesized peptide.



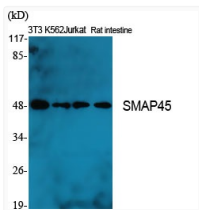
Immunohistochemistry analysis of paraffin-embedded human breast carcinoma tissue, using HDAC3 Antibody. The picture on the right is blocked with the synthesized peptide.



Western blot analysis of HepG2 cells using SMAP45 Polyclonal Antibody diluted at 1 : 2000



Immunofluorescence analysis of COS7 cells, using HDAC3 Antibody. The picture on the right is blocked with the synthesized peptide.



Western blot analysis of various cells using SMAP45 Polyclonal Antibody diluted at 1 : 2000