

Anti-Siah-1/2 antibody (181-230 aa) (STJ95661)

GENERAL INFORMATION

Product Type	Primary antibodies
Applications	WB/IHC/IF/ELISA
Host / Source	Rabbit
Reactivity	Human/Mouse/Rat

PRODUCT PROPERTIES

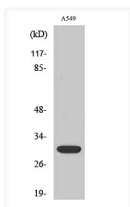
Clonality	Polyclonal
Concentration	1 mg/mL
Conjugation	Unconjugated
Purification	The antibody was affinity-purified from rabbit antiserum by affinity-chromatography using epitope-specific immunogen.
Dilution Range	WB 1:500-1:2000 IHC 1:100-1:300 IF 1:200-1:1000 ELISA 1:10000
Formulation	Liquid in PBS containing 50% Glycerol, 0.5% BSA and 0.02% Sodium Azide.
Isotype	IgG
Molecular Weight	Observed: 34kD
Storage Instruction	Store at -20°C for up to 1 year from the date of receipt, and avoid repeat freeze-thaw cycles.

TARGET INFORMATION

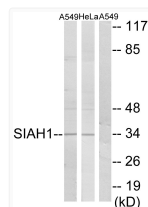
Gene ID	6478 6477
Gene Symbol	SIAH2 SIAH1
UniProt ID	SIAH2_HUMAN SIAH1_HUMAN
Immunogen Region	181-230 aa
Specificity	Siah-1/2 Polyclonal Antibody detects endogenous levels of Siah-1/2 protein.

ADDITIONAL INFORMATION

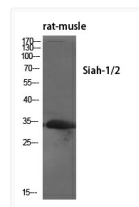
Note **STRICTLY FOR FURTHER SCIENTIFIC RESEARCH USE ONLY (RUO). MUST NOT TO BE USED IN DIAGNOSTIC OR THERAPEUTIC APPLICATIONS.**



Western blot analysis of HeLa cells using Siah-1/2 Polyclonal Antibody diluted at 1: 500



Western blot analysis of lysates from A549 and HeLa cells, using SIAH1 Antibody. The lane on the right is blocked with the synthesized peptide.



Western blot analysis of various cells using Siah-1/2 Polyclonal Antibody diluted at 1: 500