

## Anti-SEPTIN2 antibody (103-152 aa) (STJ95612)

### GENERAL INFORMATION

Product Type	Primary antibodies
Applications	WB/IHC
Host / Source	Rabbit
Reactivity	Human/Mouse/Rat

### PRODUCT PROPERTIES

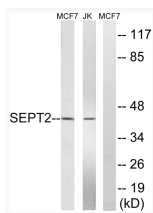
Clonality	Polyclonal
Concentration	1 mg/mL
Conjugation	Unconjugated
Purification	The antibody was affinity-purified from rabbit antiserum by affinity-chromatography using epitope-specific immunogen.
Dilution Range	WB 1:500-2000 IHC-P 1:50-300
Formulation	Liquid in PBS containing 50% Glycerol, 0.5% BSA and 0.02% Sodium Azide.
Isotype	IgG
Molecular Weight	Observed: 41kD
Storage Instruction	Store at -20°C for up to 1 year from the date of receipt, and avoid repeat freeze-thaw cycles.

### TARGET INFORMATION

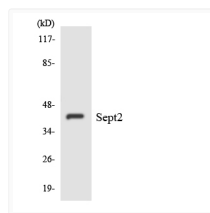
Gene ID	<a href="#">4735</a>
Gene Symbol	<a href="#">SEPTIN2</a>
UniProt ID	<a href="#">SEPT2_HUMAN</a>
Immunogen Region	103-152 aa
Specificity	Septin 2 Polyclonal Antibody detects endogenous levels of Septin 2 protein.

### ADDITIONAL INFORMATION

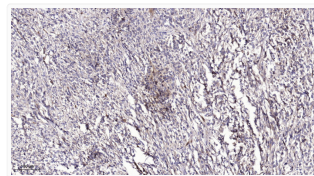
Note **STRICTLY FOR FURTHER SCIENTIFIC RESEARCH USE ONLY (RUO). MUST NOT TO BE USED IN DIAGNOSTIC OR THERAPEUTIC APPLICATIONS.**



Western blot analysis of lysates from Jurkat and MCF-7 cells, using SEPT2 Antibody. The lane on the right was blocked STJ95612.



Western blot analysis of the lysates from HepG2 cells using SEPT2 antibody. STJ95612.



Immunohistochemical analysis of paraffin-embedded human colon cancer. 1, Antibody was diluted at 1:200 (4° overnight). STJ95612.