

Anti-SEPTIN1 antibody (181-230 aa) (STJ95610)

GENERAL INFORMATION

Product Type	Primary antibodies
Applications	WB/IHC/IF/ELISA
Host / Source	Rabbit
Reactivity	Human/Mouse/Rat

PRODUCT PROPERTIES

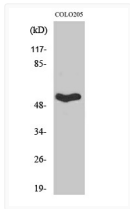
Clonality	Polyclonal
Concentration	1 mg/mL
Conjugation	Unconjugated
Purification	The antibody was affinity-purified from rabbit antiserum by affinity-chromatography using epitope-specific immunogen.
Dilution Range	WB 1:500-1:2000 IHC 1:100-1:300 ELISA 1:20000 IF 1:50-200
Formulation	Liquid in PBS containing 50% Glycerol, 0.5% BSA and 0.02% Sodium Azide.
Isotype	IgG
Molecular Weight	Observed: 41kD
Storage Instruction	Store at -20°C for up to 1 year from the date of receipt, and avoid repeat freeze-thaw cycles.

TARGET INFORMATION

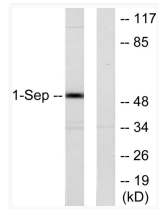
Gene ID	1731
Gene Symbol	SEPTIN1
UniProt ID	SEPT1_HUMAN
Immunogen Region	181-230 aa
Specificity	Septin 1 Polyclonal Antibody detects endogenous levels of Septin 1 protein.

ADDITIONAL INFORMATION

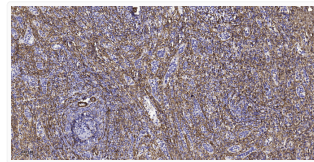
Note STRICTLY FOR FURTHER SCIENTIFIC RESEARCH USE ONLY (RUO). MUST NOT TO BE USED IN DIAGNOSTIC OR THERAPEUTIC APPLICATIONS.



Western blot analysis of various cells using Septin 1 polyclonal antibody STJ95610



Western blot analysis of lysates from Jurkat cells, using SEPT1 Antibody. The lane on the right is blocked with the STJ95610



Immunohistochemical analysis of paraffin-embedded human spleen tissue. 1, Primary antibody was diluted at 1:200 (4° STJ95610)