

Anti-FAP antibody (331-380 aa) (STJ95609)

GENERAL INFORMATION

Product Type	Primary antibodies
Applications	WB/IHC/IF/ELISA
Host / Source	Rabbit
Reactivity	Human/Mouse/Rat

PRODUCT PROPERTIES

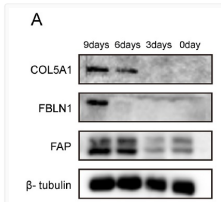
Clonality	Polyclonal
Concentration	1 mg/mL
Conjugation	Unconjugated
Purification	The antibody was affinity-purified from rabbit antiserum by affinity-chromatography using epitope-specific immunogen.
Dilution Range	WB 1:500-1:2000 IHC-P 1:100-300 ELISA 1:20000 IF 1:100-300
Formulation	Liquid in PBS containing 50% Glycerol, 0.5% BSA and 0.02% Sodium Azide.
Isotype	IgG
Molecular Weight	Observed: 90kD
Storage Instruction	Store at -20°C for up to 1 year from the date of receipt, and avoid repeat freeze-thaw cycles.

TARGET INFORMATION

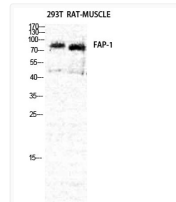
Gene ID	2191
Gene Symbol	FAP
UniProt ID	SEPR_HUMAN
Immunogen Region	331-380 aa
Specificity	Seprase Polyclonal Antibody detects endogenous levels of Seprase protein.

ADDITIONAL INFORMATION

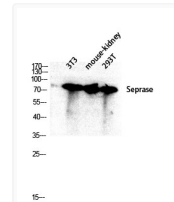
Note STRICTLY FOR FURTHER SCIENTIFIC RESEARCH USE ONLY (RUO). MUST NOT TO BE USED IN DIAGNOSTIC OR THERAPEUTIC APPLICATIONS.



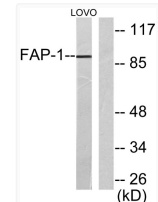
Identification and targeting of cancer-associated fibroblast signature genes for prognosis and therapy in cutaneous STJ95609



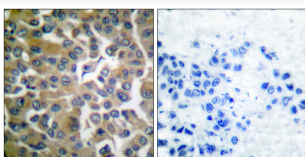
Western Blot analysis of rat muscle 293T cells using Seprase Polyclonal Antibody diluted at 1:2000 STJ95609



Western blot analysis of 3T3 mouse kidney 293T lysate using Seprase antibody. Antibody was diluted at 1:2000. STJ95609



Western blot analysis of lysates from LOVO cells, using FAP-1 Antibody. The lane on the right was blocked with the STJ95609



Immunohistochemistry analysis of paraffin-embedded human breast carcinoma tissue, using FAP-1 Antibody. The picture on STJ95609