

Anti-ESPL1 antibody (767-816 aa) (STJ95608)

GENERAL INFORMATION

Product Type	Primary antibodies
Applications	WB/IHC/IF/ELISA
Host / Source	Rabbit
Reactivity	Human/Mouse

PRODUCT PROPERTIES

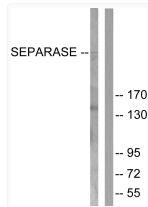
Clonality	Polyclonal
Concentration	1 mg/mL
Conjugation	Unconjugated
Purification	The antibody was affinity-purified from rabbit antiserum by affinity-chromatography using epitope-specific immunogen.
Dilution Range	WB 1:500-1:2000 IHC 1:100-1:300 IF 1:200-1:1000 ELISA 1:40000
Formulation	Liquid in PBS containing 50% Glycerol, 0.5% BSA and 0.02% Sodium Azide.
Isotype	IgG
Molecular Weight	Observed: 230kD
Storage Instruction	Store at -20°C for up to 1 year from the date of receipt, and avoid repeat freeze-thaw cycles.

TARGET INFORMATION

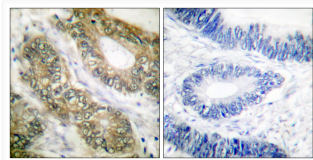
Gene ID	9700
Gene Symbol	ESPL1
UniProt ID	ESPL1_HUMAN
Immunogen Region	767-816 aa
Specificity	Separase Polyclonal Antibody detects endogenous levels of Separase protein.

ADDITIONAL INFORMATION

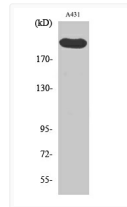
Note STRICTLY FOR FURTHER SCIENTIFIC RESEARCH USE ONLY (RUO). MUST NOT TO BE USED IN DIAGNOSTIC OR THERAPEUTIC APPLICATIONS.



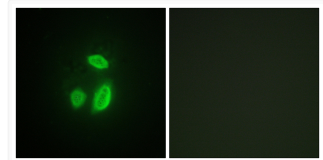
Western blot analysis of lysates from 293 cells, treated with EGF 200ng/ml 30', using SEPARASE Antibody. The lane on the right is blocked with the synthesized peptide.



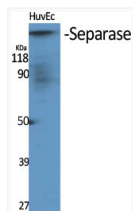
Immunohistochemistry analysis of paraffin-embedded human colon carcinoma tissue, using SEPARASE Antibody. The picture on the right is blocked with the synthesized peptide.



Western blot analysis of A431 cells using Separase Polyclonal Antibody diluted at 1: 1000



Immunofluorescence analysis of HUVEC cells, using SEPARASE Antibody. The picture on the right is blocked with the synthesized peptide.



Western blot analysis of various cells using Separase Polyclonal Antibody diluted at 1: 1000