

## Anti-SCTR antibody (100-149 aa) (STJ95595)

### GENERAL INFORMATION

Product Type	Primary antibodies
Applications	WB/IHC/IF/ELISA
Host / Source	Rabbit
Reactivity	Human/Rat/Mouse

### PRODUCT PROPERTIES

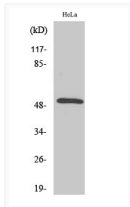
Clonality	Polyclonal
Concentration	1 mg/mL
Conjugation	Unconjugated
Purification	The antibody was affinity-purified from rabbit antiserum by affinity-chromatography using epitope-specific immunogen.
Dilution Range	WB 1:500-1:2000 IHC 1:100-1:300 IF 1:200-1:1000 ELISA 1:20000
Formulation	Liquid in PBS containing 50% Glycerol, 0.5% BSA and 0.02% Sodium Azide.
Isotype	IgG
Molecular Weight	Observed: 48kD
Storage Instruction	Store at -20°C for up to 1 year from the date of receipt, and avoid repeat freeze-thaw cycles.

### TARGET INFORMATION

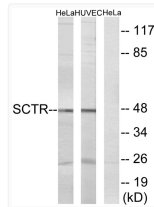
Gene ID	<a href="#">6344</a>
Gene Symbol	<a href="#">SCTR</a>
UniProt ID	<a href="#">SCTR_HUMAN</a>
Immunogen Region	100-149 aa
Specificity	Secretin Receptor Polyclonal Antibody detects endogenous levels of Secretin Receptor protein.

### ADDITIONAL INFORMATION

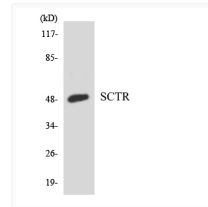
Note STRICTLY FOR FURTHER SCIENTIFIC RESEARCH USE ONLY (RUO). MUST NOT TO BE USED IN DIAGNOSTIC OR THERAPEUTIC APPLICATIONS.



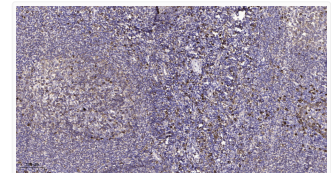
Western blot analysis of various cells using Secretin Receptor Polyclonal Antibody diluted at 1:1000 STJ95595



Western blot analysis of lysates from HeLa and HUVEC cells, using SCTR Antibody. The lane on the right was blocked with STJ95595



Western blot analysis of the lysates from HeLa cells using SCTR antibody. STJ95595



Immunohistochemical analysis of paraffin-embedded human tonsil. 1, Antibody was diluted at 1:200 (4° overnight). 2, STJ95595