

Anti-SCFD1 antibody (533-582 aa) (STJ95586)

GENERAL INFORMATION

Product Type	Primary antibodies
Applications	WB/IHC
Host / Source	Rabbit
Reactivity	Human/Mouse/Rat

PRODUCT PROPERTIES

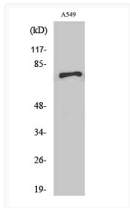
Clonality	Polyclonal
Concentration	1 mg/mL
Conjugation	Unconjugated
Purification	The antibody was affinity-purified from rabbit antiserum by affinity-chromatography using epitope-specific immunogen.
Dilution Range	WB 1:500-2000 IHC-P 1:50-300
Formulation	Liquid in PBS containing 50% Glycerol, 0.5% BSA and 0.02% Sodium Azide.
Isotype	IgG
Molecular Weight	Calculated: 72kD
Storage Instruction	Store at -20°C for up to 1 year from the date of receipt, and avoid repeat freeze-thaw cycles.

TARGET INFORMATION

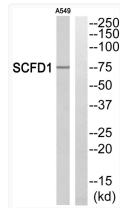
Gene ID	23256
Gene Symbol	SCFD1
UniProt ID	SCFD1_HUMAN
Immunogen Region	533-582 aa
Specificity	SCFD1 Polyclonal Antibody detects endogenous levels of SCFD1 protein.

ADDITIONAL INFORMATION

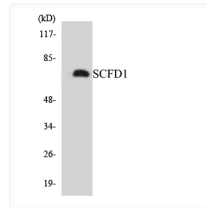
Note **STRICTLY FOR FURTHER SCIENTIFIC RESEARCH USE ONLY (RUO). MUST NOT TO BE USED IN DIAGNOSTIC OR THERAPEUTIC APPLICATIONS.**



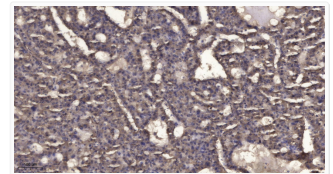
Western Blot analysis of various cells using SCFD1 Polyclonal Antibody STJ95586



Western blot analysis of SCFD1 Antibody. The lane on the right was blocked with the SCFD1 peptide. STJ95586



Western blot analysis of the lysates from 293 cells using SCFD1 antibody. STJ95586



Immunohistochemical analysis of paraffin-embedded human liver cancer. 1, Antibody was diluted at 1:200 (4° overnight). STJ95586