

Anti-SCAMP1 antibody (273-322 aa) (STJ95583)

GENERAL INFORMATION

Product Type	Primary antibodies
Applications	WB/IHC
Host / Source	Rabbit
Reactivity	Human/Mouse/Rat

PRODUCT PROPERTIES

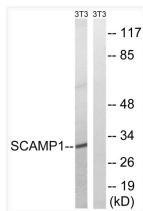
Clonality	Polyclonal
Concentration	1 mg/mL
Conjugation	Unconjugated
Purification	The antibody was affinity-purified from rabbit antiserum by affinity-chromatography using epitope-specific immunogen.
Dilution Range	WB 1:500-2000 IHC-P 1:50-300
Formulation	Liquid in PBS containing 50% Glycerol, 0.5% BSA and 0.02% Sodium Azide.
Isotype	IgG
Molecular Weight	Observed: 32kD
Storage Instruction	Store at -20°C for up to 1 year from the date of receipt, and avoid repeat freeze-thaw cycles.

TARGET INFORMATION

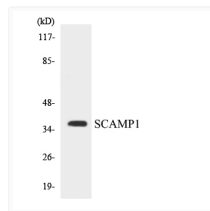
Gene ID	9522
Gene Symbol	SCAMP1
UniProt ID	SCAM1_HUMAN
Immunogen Region	273-322 aa
Specificity	SCAMP1 Polyclonal Antibody detects endogenous levels of SCAMP1 protein.

ADDITIONAL INFORMATION

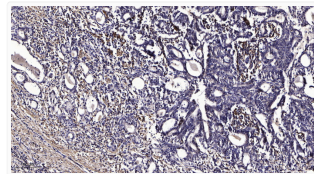
Note **STRICTLY FOR FURTHER SCIENTIFIC RESEARCH USE ONLY (RUO). MUST NOT TO BE USED IN DIAGNOSTIC OR THERAPEUTIC APPLICATIONS.**



Western blot analysis of lysates from NIH/3T3 cells, using SCAMP1 Antibody. The lane on the right is blocked with the STJ95583



Western blot analysis of the lysates from HeLa cells using SCAMP1 antibody. STJ95583



Immunohistochemical analysis of paraffin-embedded human gastric adenocarcinoma. 1, Antibody was diluted at 1:200 (4° STJ95583