

Anti-RRS1 antibody (254-303 aa) (STJ95543)

GENERAL INFORMATION

Product Type	Primary antibodies
Applications	WB/IHC/IF/ELISA
Host / Source	Rabbit
Reactivity	Human/Mouse/Rat

PRODUCT PROPERTIES

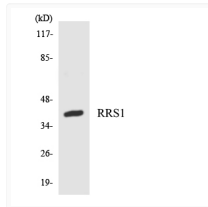
Clonality	Polyclonal
Concentration	1 mg/mL
Conjugation	Unconjugated
Purification	The antibody was affinity-purified from rabbit antiserum by affinity-chromatography using epitope-specific immunogen.
Dilution Range	WB 1:500-1:2000 IHC 1:100-1:300 ELISA 1:10000 IF 1:50-200
Formulation	Liquid in PBS containing 50% Glycerol, 0.5% BSA and 0.02% Sodium Azide.
Isotype	IgG
Molecular Weight	Observed: 41kD
Storage Instruction	Store at -20°C for up to 1 year from the date of receipt, and avoid repeat freeze-thaw cycles.

TARGET INFORMATION

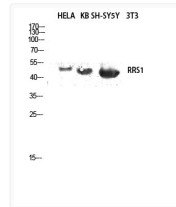
Gene ID	23212
Gene Symbol	RRS1
UniProt ID	RRS1_HUMAN
Immunogen Region	254-303 aa
Specificity	RRS1 Polyclonal Antibody detects endogenous levels of RRS1 protein.

ADDITIONAL INFORMATION

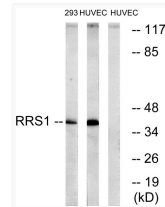
Note **STRICTLY FOR FURTHER SCIENTIFIC RESEARCH USE ONLY (RUO). MUST NOT TO BE USED IN DIAGNOSTIC OR THERAPEUTIC APPLICATIONS.**



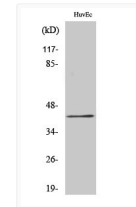
Western blot analysis of the lysates from HT-29 cells using RRS1 antibody.



Western blot analysis of HELA KB SH-SY5Y lysis using RRS1 antibody. Antibody was diluted at 1:2000 cells nucleus extracted by Minute™ Cytoplasmic and Nuclear Fractionation kit (SC-003, Inventibio, MN, USA).



Western blot analysis of lysates from HUVEC and 293 cells, using RRS1 Antibody. The lane on the right is blocked with the synthesized peptide.



Western blot analysis of various cells using RRS1 Polyclonal Antibody diluted at 1: 2000 cells nucleus extracted by Minute™ Cytoplasmic and Nuclear Fractionation kit (SC-003, Inventibio, MN, USA).