

Anti-RIPK2 antibody (146-195 aa) (STJ95512)

GENERAL INFORMATION

Product Type	Primary antibodies
Applications	WB/IHC/IF/ELISA
Host / Source	Rabbit
Reactivity	Human/Mouse

PRODUCT PROPERTIES

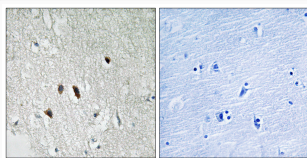
Clonality	Polyclonal
Concentration	1 mg/mL
Conjugation	Unconjugated
Purification	The antibody was affinity-purified from rabbit antiserum by affinity-chromatography using epitope-specific immunogen.
Dilution Range	WB 1:500-1:2000 IHC 1:100-1:300 ELISA 1:40000 IF 1:50-200
Formulation	Liquid in PBS containing 50% Glycerol, 0.5% BSA and 0.02% Sodium Azide.
Isotype	IgG
Molecular Weight	Observed: 61kD
Storage Instruction	Store at -20°C for up to 1 year from the date of receipt, and avoid repeat freeze-thaw cycles.

TARGET INFORMATION

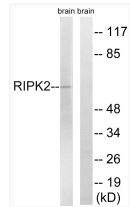
Gene ID	8767
Gene Symbol	RIPK2
UniProt ID	RIPK2_HUMAN
Immunogen Region	146-195 aa
Specificity	RIP2 Polyclonal Antibody detects endogenous levels of RIP2 protein.

ADDITIONAL INFORMATION

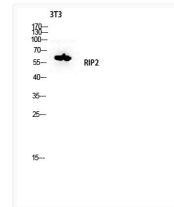
Note STRICTLY FOR FURTHER SCIENTIFIC RESEARCH USE ONLY (RUO). MUST NOT TO BE USED IN DIAGNOSTIC OR THERAPEUTIC APPLICATIONS.



Immunohistochemistry analysis of paraffin-embedded human brain tissue, using RIPK2 Antibody. The picture on the right is blocked with the synthesized peptide.



Western blot analysis of lysates from rat brain cells, using RIPK2 Antibody. The lane on the right is blocked with the synthesized peptide.



Western blot analysis of 3T3 lysis using RIP2 antibody. Antibody was diluted at 1:500