

## Anti-RPS8 antibody (111-160 aa) (STJ95506)

### GENERAL INFORMATION

Product Type	Primary antibodies
Applications	WB/IHC/IF/ELISA
Host / Source	Rabbit
Reactivity	Human/Mouse/Rat

### PRODUCT PROPERTIES

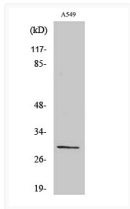
Clonality	Polyclonal
Concentration	1 mg/mL
Conjugation	Unconjugated
Purification	The antibody was affinity-purified from rabbit antiserum by affinity-chromatography using epitope-specific immunogen.
Dilution Range	WB 1:500-1:2000 IHC 1:100-1:300 ELISA 1:20000 IF 1:50-200
Formulation	Liquid in PBS containing 50% Glycerol, 0.5% BSA and 0.02% Sodium Azide.
Isotype	IgG
Molecular Weight	Observed: 30kD
Storage Instruction	Store at -20°C for up to 1 year from the date of receipt, and avoid repeat freeze-thaw cycles.

### TARGET INFORMATION

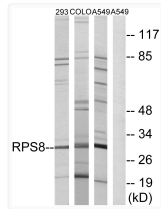
Gene ID	<a href="#">6202</a>
Gene Symbol	<a href="#">RPS8</a>
UniProt ID	<a href="#">RS8_HUMAN</a>
Immunogen Region	111-160 aa
Specificity	Ribosomal Protein S8 Polyclonal Antibody detects endogenous levels of Ribosomal Protein S8 protein.

### ADDITIONAL INFORMATION

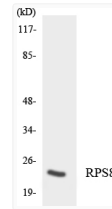
Note **STRICTLY FOR FURTHER SCIENTIFIC RESEARCH USE ONLY (RUO). MUST NOT TO BE USED IN DIAGNOSTIC OR THERAPEUTIC APPLICATIONS.**



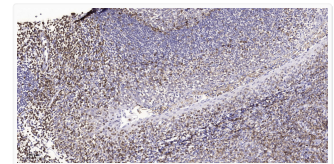
Western blot analysis of various cells using Ribosomal Protein S8 polyclonal antibody diluted at 1:2000 STJ95506



Western blot analysis of lysates from A549, 293, and COLO 205 cells, using RPS8 Antibody. The lane on the right is STJ95506



Western blot analysis of the lysates from Jurkat cells using RPS8 antibody. STJ95506



Immunohistochemical analysis of paraffin-embedded human tonsil. 1, Tris-EDTA, pH 9.0 was used for antigen retrieval. 2, STJ95506