

Anti-RPS4X antibody (81-130 aa) (STJ95500)

GENERAL INFORMATION

Product Type	Primary antibodies
Applications	WB/ELISA/IHC
Host / Source	Rabbit
Reactivity	Human/Mouse/Rat/Cat

PRODUCT PROPERTIES

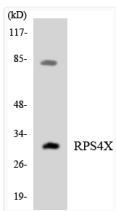
Clonality	Polyclonal
Concentration	1 mg/mL
Conjugation	Unconjugated
Purification	The antibody was affinity-purified from rabbit antiserum by affinity-chromatography using epitope-specific immunogen.
Dilution Range	WB 1:500-2000 IHC-P 1:50-300 ELISA 2000-20000
Formulation	Liquid in PBS containing 50% Glycerol, 0.5% BSA and 0.02% Sodium Azide.
Isotype	IgG
Molecular Weight	Observed: 30kD
Storage Instruction	Store at -20°C for up to 1 year from the date of receipt, and avoid repeat freeze-thaw cycles.

TARGET INFORMATION

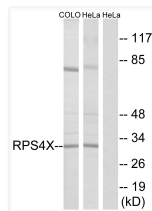
Gene ID	6191
Gene Symbol	RPS4X
UniProt ID	RS4X_HUMAN
Immunogen Region	81-130 aa
Specificity	Ribosomal Protein S4X Polyclonal Antibody detects endogenous levels of Ribosomal Protein S4X protein.

ADDITIONAL INFORMATION

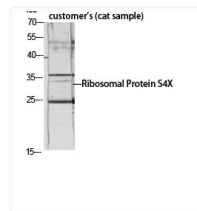
Note STRICTLY FOR FURTHER SCIENTIFIC RESEARCH USE ONLY (RUO). MUST NOT TO BE USED IN DIAGNOSTIC OR THERAPEUTIC APPLICATIONS.



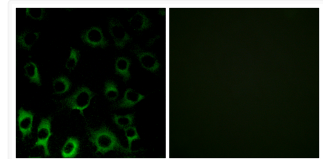
Western blot analysis of the lysates from HT-29 cells using RPS4X antibody.



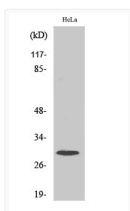
Western blot analysis of lysates from HeLa and COLO cells, using RPS4X Antibody. The lane on the right is blocked with the synthesized peptide.



Western blot analysis of customer's (cat sample) using Ribosomal Protein S4X Polyclonal Antibody diluted at 1 : 1000



Immunofluorescence analysis of HUVEC cells, using RPS4X Antibody. The picture on the right is blocked with the synthesized peptide.



Western blot analysis of various cells using Ribosomal Protein S4X Polyclonal Antibody diluted at 1 : 1000