

Anti-RPL35 antibody (51-100 aa) (STJ95474)

GENERAL INFORMATION

Product Type	Primary antibodies
Applications	WB/IHC/IF/ELISA
Host / Source	Rabbit
Reactivity	Human/Mouse/Rat

PRODUCT PROPERTIES

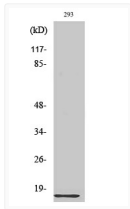
Clonality	Polyclonal
Concentration	1 mg/mL
Conjugation	Unconjugated
Purification	The antibody was affinity-purified from rabbit antiserum by affinity-chromatography using epitope-specific immunogen.
Dilution Range	WB 1:500-1:2000 IHC 1:100-1:300 ELISA 1:10000 IF 1:50-200
Formulation	Liquid in PBS containing 50% Glycerol, 0.5% BSA and 0.02% Sodium Azide.
Isotype	IgG
Molecular Weight	Observed: 18kD
Storage Instruction	Store at -20°C for up to 1 year from the date of receipt, and avoid repeat freeze-thaw cycles.

TARGET INFORMATION

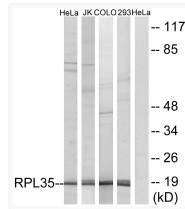
Gene ID	11224
Gene Symbol	RPL35
UniProt ID	RL35_HUMAN
Immunogen Region	51-100 aa
Specificity	Ribosomal Protein L35 Polyclonal Antibody detects endogenous levels of Ribosomal Protein L35 protein.

ADDITIONAL INFORMATION

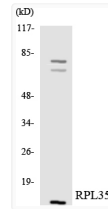
Note: STRICTLY FOR FURTHER SCIENTIFIC RESEARCH USE ONLY (RUO). MUST NOT TO BE USED IN DIAGNOSTIC OR THERAPEUTIC APPLICATIONS.



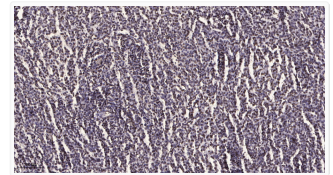
Western Blot analysis of various cells using Ribosomal Protein L35 Polyclonal Antibody diluted at 1:2000 STJ95474



Western blot analysis of lysates from 293, HeLa, COLO, and Jurkat cells, using RPL35 Antibody. The lane on the right is STJ95474



Western blot analysis of the lysates from HeLa cells using RPL35 antibody. STJ95474



Immunohistochemical analysis of paraffin-embedded human brain tumor. 1, Antibody was diluted at 1:200 (4° overnight). STJ95474