

## Anti-RPL30 antibody (66-115 aa) (STJ95471)

### GENERAL INFORMATION

Product Type	Primary antibodies
Applications	WB/IHC/IF/ELISA
Host / Source	Rabbit
Reactivity	Human/Mouse/Rat/Monkey

### PRODUCT PROPERTIES

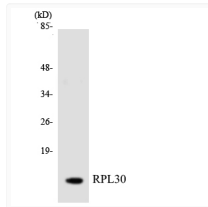
Clonality	Polyclonal
Concentration	1 mg/mL
Conjugation	Unconjugated
Purification	The antibody was affinity-purified from rabbit antiserum by affinity-chromatography using epitope-specific immunogen.
Dilution Range	WB 1:500-1:2000 IHC 1:100-1:300 ELISA 1:40000 IF 1:50-200
Formulation	Liquid in PBS containing 50% Glycerol, 0.5% BSA and 0.02% Sodium Azide.
Isotype	IgG
Molecular Weight	Observed: 13kD
Storage Instruction	Store at -20°C for up to 1 year from the date of receipt, and avoid repeat freeze-thaw cycles.

### TARGET INFORMATION

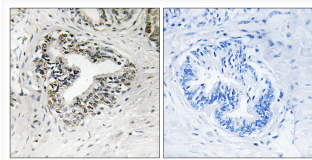
Gene ID	<a href="#">6156</a>
Gene Symbol	<a href="#">RPL30</a>
UniProt ID	<a href="#">RL30_HUMAN</a>
Immunogen Region	66-115 aa
Specificity	Ribosomal Protein L30 Polyclonal Antibody detects endogenous levels of Ribosomal Protein L30 protein.

### ADDITIONAL INFORMATION

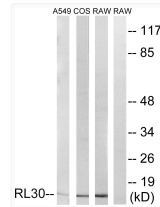
Note **STRICTLY FOR FURTHER SCIENTIFIC RESEARCH USE ONLY (RUO). MUST NOT TO BE USED IN DIAGNOSTIC OR THERAPEUTIC APPLICATIONS.**



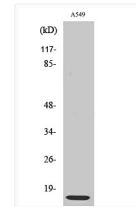
Western blot analysis of the lysates from HT-29 cells using RPL30 antibody.



Immunohistochemistry analysis of paraffin-embedded human prostate carcinoma tissue, using RPL30 Antibody. The picture on the right is blocked with the synthesized peptide.



Western blot analysis of lysates from A549, COS7, and RAW264.7 cells, using RPL30 Antibody. The lane on the right is blocked with the synthesized peptide.



Western blot analysis of various cells using Ribosomal Protein L30 Polyclonal Antibody diluted at 1: 2000