

Anti-RPL3 antibody (211-260 aa) (STJ95470)

GENERAL INFORMATION

Product Type	Primary antibodies
Applications	WB/IHC/IF/ELISA
Host / Source	Rabbit
Reactivity	Human/Mouse/Rat

PRODUCT PROPERTIES

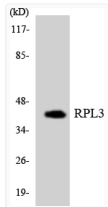
Clonality	Polyclonal
Concentration	1 mg/mL
Conjugation	Unconjugated
Purification	The antibody was affinity-purified from rabbit antiserum by affinity-chromatography using epitope-specific immunogen.
Dilution Range	WB 1:500-1:2000 IHC 1:100-1:300 ELISA 1:20000 IF 1:50-200
Formulation	Liquid in PBS containing 50% Glycerol, 0.5% BSA and 0.02% Sodium Azide.
Isotype	IgG
Molecular Weight	Observed: 46kD
Storage Instruction	Store at -20°C for up to 1 year from the date of receipt, and avoid repeat freeze-thaw cycles.

TARGET INFORMATION

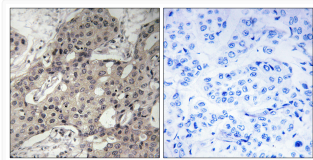
Gene ID	6122
Gene Symbol	RPL3
UniProt ID	RL3_HUMAN
Immunogen Region	211-260 aa
Specificity	Ribosomal Protein L3 Polyclonal Antibody detects endogenous levels of Ribosomal Protein L3 protein.

ADDITIONAL INFORMATION

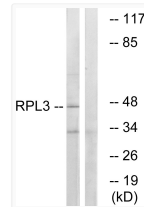
Note **STRICTLY FOR FURTHER SCIENTIFIC RESEARCH USE ONLY (RUO). MUST NOT TO BE USED IN DIAGNOSTIC OR THERAPEUTIC APPLICATIONS.**



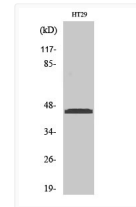
Western blot analysis of the lysates from HUVEC cells using RPL3 antibody.



Immunohistochemistry analysis of paraffin-embedded human breast carcinoma tissue, using RPL3 Antibody. The picture on the right is blocked with the synthesized peptide.



Western blot analysis of lysates from HT-29 cells, using RPL3 Antibody. The lane on the right is blocked with the synthesized peptide.



Western blot analysis of various cells using Ribosomal Protein L3 Polyclonal Antibody