

Anti-RHOBTB3 antibody (335-384 aa) (STJ95450)

GENERAL INFORMATION

Product Type	Primary antibodies
Applications	WB/IHC/IF/ELISA
Host / Source	Rabbit
Reactivity	Human/Mouse

PRODUCT PROPERTIES

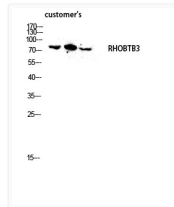
Clonality	Polyclonal
Concentration	1 mg/mL
Conjugation	Unconjugated
Purification	The antibody was affinity-purified from rabbit antiserum by affinity-chromatography using epitope-specific immunogen.
Dilution Range	WB 1:500-1:2000 IHC-P 1:50-300 ELISA 1:20000 IF 1:50-200
Formulation	Liquid in PBS containing 50% Glycerol, 0.5% BSA and 0.02% Sodium Azide.
Isotype	IgG
Molecular Weight	Observed: 70kD
Storage Instruction	Store at -20°C for up to 1 year from the date of receipt, and avoid repeat freeze-thaw cycles.

TARGET INFORMATION

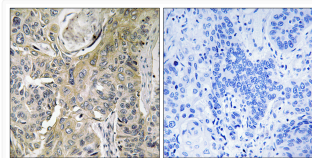
Gene ID	22836
Gene Symbol	RHOBTB3
UniProt ID	RHBT3_HUMAN
Immunogen Region	335-384 aa
Specificity	RHOBTB3 Polyclonal Antibody detects endogenous levels of RHOBTB3 protein.

ADDITIONAL INFORMATION

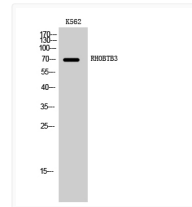
Note STRICTLY FOR FURTHER SCIENTIFIC RESEARCH USE ONLY (RUO). MUST NOT TO BE USED IN DIAGNOSTIC OR THERAPEUTIC APPLICATIONS.



Western blot analysis of customer's lysis using RHOBTB3 antibody. Antibody was diluted at 1:2000



Immunohistochemistry analysis of paraffin-embedded human lung carcinoma tissue, using RHOBTB3 Antibody. The picture on the right is blocked with the synthesized peptide.



Western blot analysis of K562 cells using RHOBTB3 Polyclonal Antibody diluted at 1: 2000