

Anti-RGS5 antibody (89-138 aa) (STJ95440)

GENERAL INFORMATION

Product Type	Primary antibodies
Applications	WB/IHC/IF/ELISA
Host / Source	Rabbit
Reactivity	Human/Mouse/Rat

PRODUCT PROPERTIES

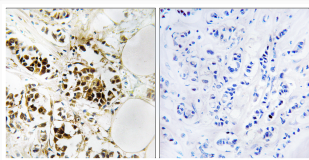
Clonality	Polyclonal
Concentration	1 mg/mL
Conjugation	Unconjugated
Purification	The antibody was affinity-purified from rabbit antiserum by affinity-chromatography using epitope-specific immunogen.
Dilution Range	WB 1:500-1:2000 IHC 1:100-1:300 ELISA 1:20000 IF 1:50-200
Formulation	Liquid in PBS containing 50% Glycerol, 0.5% BSA and 0.02% Sodium Azide.
Isotype	IgG
Molecular Weight	Observed: 20kD
Storage Instruction	Store at -20°C for up to 1 year from the date of receipt, and avoid repeat freeze-thaw cycles.

TARGET INFORMATION

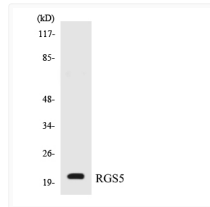
Gene ID	8490
Gene Symbol	RGS5
UniProt ID	RGS5_HUMAN
Immunogen Region	89-138 aa
Specificity	RGS5 Polyclonal Antibody detects endogenous levels of RGS5 protein.

ADDITIONAL INFORMATION

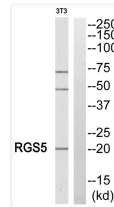
Note **STRICTLY FOR FURTHER SCIENTIFIC RESEARCH USE ONLY (RUO). MUST NOT TO BE USED IN DIAGNOSTIC OR THERAPEUTIC APPLICATIONS.**



Immunohistochemistry analysis of paraffin-embedded human breast carcinoma, using RGS5 Antibody. The lane on the right is blocked with the RGS5 peptide.



Western blot analysis of the lysates from HepG2 cells using RGS5 antibody.



Western blot analysis of RGS5 Antibody. The lane on the right is blocked with the RGS5 peptide.