

Anti-RGPD2/3/4/6/8 antibody (577-626 aa) (STJ95433)

GENERAL INFORMATION

Product Type	Primary antibodies
Applications	WB/ELISA/IHC
Host / Source	Rabbit
Reactivity	Human/Rat/Mouse

PRODUCT PROPERTIES

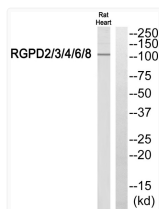
Clonality	Polyclonal
Concentration	1 mg/mL
Conjugation	Unconjugated
Purification	The antibody was affinity-purified from rabbit antiserum by affinity-chromatography using epitope-specific immunogen.
Dilution Range	WB 1:500-2000 IHC-P 1:50-300 ELISA 2000-20000
Formulation	Liquid in PBS containing 50% Glycerol, 0.5% BSA and 0.02% Sodium Azide.
Isotype	IgG
Molecular Weight	Observed: 110kD
Storage Instruction	Store at -20°C for up to 1 year from the date of receipt, and avoid repeat freeze-thaw cycles.

TARGET INFORMATION

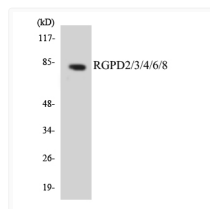
Gene ID	653489 285190 727851
Gene Symbol	RGPD3 RGPD4 RGPD3_HUMAN RGPD4_HUMAN RGPD8_HUMAN
Immunogen Region	577-626 aa
Specificity	RGPD2/3/4/6/8 Polyclonal Antibody detects endogenous levels of RGPD2/3/4/6/8 protein.

ADDITIONAL INFORMATION

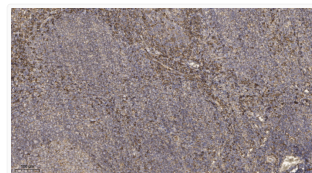
Note STRICTLY FOR FURTHER SCIENTIFIC RESEARCH USE ONLY (RUO). MUST NOT TO BE USED IN DIAGNOSTIC OR THERAPEUTIC APPLICATIONS.



Western blot analysis of RGPD2/3/4/6/8 Antibody. The lane on the right was blocked with the RGPD2/3/4/6/8 peptide. STJ95433



Western blot analysis of the lysates from Jurkat cells using RGPD2/3/4/6/8 antibody. STJ95433



Immunohistochemical analysis of paraffin-embedded human tonsil. 1. Antibody was diluted at 1:200 (4°C overnight). 2. STJ95433