

## Anti-RACGAP1 antibody (353-402 aa) (STJ95318)

### GENERAL INFORMATION

Product Type	Primary antibodies
Applications	WB/IHC/IF/ELISA
Host / Source	Rabbit
Reactivity	Human/Mouse/Rat/Monkey

### PRODUCT PROPERTIES

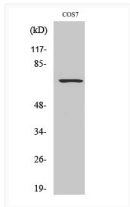
Clonality	Polyclonal
Concentration	1 mg/mL
Conjugation	Unconjugated
Purification	The antibody was affinity-purified from rabbit antiserum by affinity-chromatography using epitope-specific immunogen.
Dilution Range	WB 1:500-1:2000 IHC 1:100-1:300 IF 1:200-1:1000 ELISA 1:40000
Formulation	Liquid in PBS containing 50% Glycerol, 0.5% BSA and 0.02% Sodium Azide.
Isotype	IgG
Molecular Weight	Observed: 72kD
Storage Instruction	Store at -20°C for up to 1 year from the date of receipt, and avoid repeat freeze-thaw cycles.

### TARGET INFORMATION

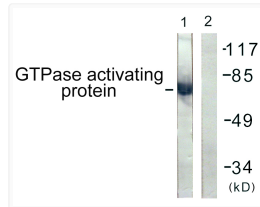
Gene ID	<a href="#">29127</a>
Gene Symbol	<a href="#">RACGAP1</a>
UniProt ID	<a href="#">RGAP1_HUMAN</a>
Immunogen Region	353-402 aa
Specificity	Rac GAP1 Polyclonal Antibody detects endogenous levels of Rac GAP1 protein.

### ADDITIONAL INFORMATION

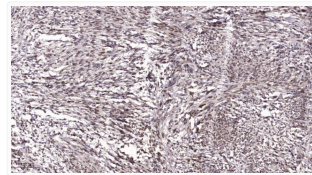
Note **STRICTLY FOR FURTHER SCIENTIFIC RESEARCH USE ONLY (RUO). MUST NOT TO BE USED IN DIAGNOSTIC OR THERAPEUTIC APPLICATIONS.**



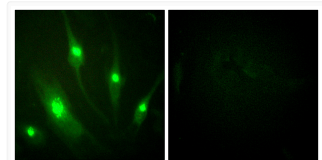
Western Blot analysis of various cells using Rac1 GAP1 Polyclonal Antibody STJ95318



Western blot analysis of lysates from COS7 cells, using GTPase-Activating Protein Antibody. The lane on the right is STJ95318



Immunohistochemical analysis of paraffin-embedded human colon cancer. 1, Antibody was diluted at 1:200 (4° overnight). STJ95318



Immunofluorescence analysis of HeLa cells using GTPase Activating Protein Antibody. The picture on the right is blocked STJ95318